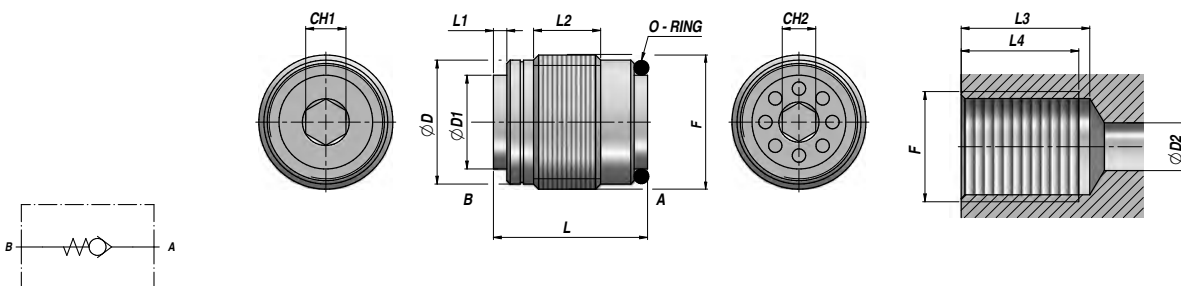
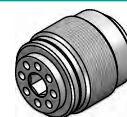


VALVOLA UNIDIREZIONALE (TENUTA A SFERA)

CHECK VALVE (BALL TYPE)
RÜCKSCHLAGVENTIL (KUGELSPERRUNG)

VUI



Codice Code Bestell-Nr.	F BSP	Q MAX l/min	P MAX bar	Tipo Type Typ	L	L1	L2	ØD	ØD1	CH1	CH2	L3	L4	ØD2	kg x 100
VCG301.100000	1/4"	18	350	VUI 010	17	1	6	11,3	9,2	3	3	28	25	8	1,00
VCG301.200000	3/8"	25	350	VUI 020	18,5	1,8	7,5	14,8	11	4	3	30	27	9	2,00
VCG301.300000	1/2"	50	350	VUI 030	23	1,8	9,5	18,5	14	6	5	36	32	12	4,00
VCG301.400000	3/4"	78	350	VUI 040	28,5	2,7	14,5	24	19	8	8	42	37	17	7,00

Pressione di apertura - Opening pressure - Öffnungsdruck: bar 0,5

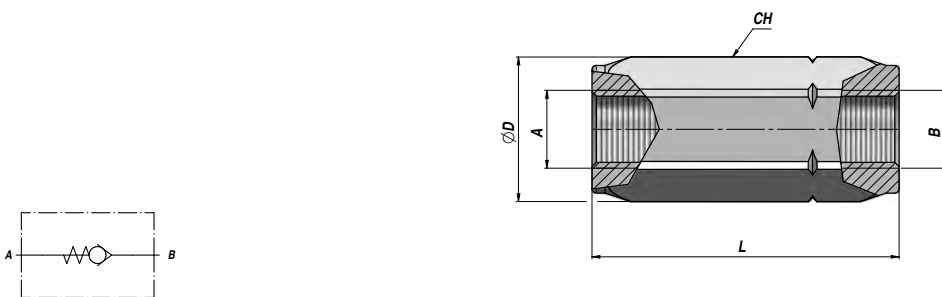
CARTUCCIA
CARTRIDGE
PATRONE

MATERIALE - MATERIAL: ACCIAIO - STEEL - STAHL

VALVOLA UNIDIREZIONALE (TENUTA A CONO)

CHECK VALVE (POPPET TYPE)
RÜCKSCHLAGVENTIL (KEGELSPERRUNG)

VUR/C



Codice Code Bestell-Nr.	A - B BSP	Q MAX l/min	P MAX bar	Tipo Type Typ	L	ØD	CH	kg
VSG303.C10000	1/4"	30	400	VUR 010-C	58	21	19	0,10
VSG303.C20000	3/8"	50	400	VUR 020-C	62	27	24	0,18
VSG303.C30000	1/2"	90	350	VUR 030-C	71	33	30	0,31
VSG303.C40000	3/4"	130	300	VUR 040-C	83	40	36	0,56
VSG303.C50000	1"	180	270	VUR 050-C	106	59	45	0,91
VSG303.C60000	1"1/4	250	250	VUR 060-C	127	63	55	1,48
VSG303.C70000	1"1/2	380	200	VUR 070-C	138	74	65	2,37

Pressione di apertura - Opening pressure - Öffnungsdruck: bar 0,5 (Standard) - 4 - 8

MONTAGGIO IN LINEA
LINE MOUNTING
REIHENMONTAGE

MATERIALE - MATERIAL: ACCIAIO - STEEL - STAHL