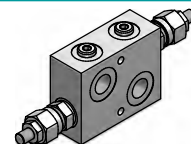
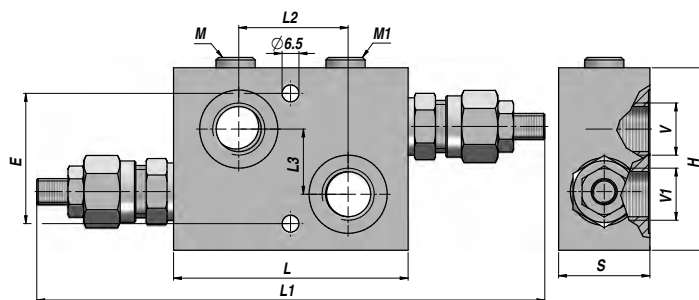
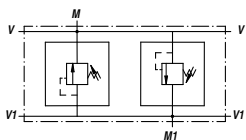


VALVOLA ANTIURTO DOPPIA
DUAL CROSS-OVER RELIEF VALVE
SCHOCKVENTIL DOPPELWIRKEND

VMDI 35



Codice Code Bestell-Nr.	V BSP	V1 BSP	M-M1 BSP	Q MAX l/min	P MAX bar	Tipo Type Typ	L	L1 max	L2	L3	E	H	S	kg
VAG021.0320B1	3/8"	3/8"	1/4"	35	350	VMDI A35-020-B1	90	190	42	25	50	70	35	0,79
VAG021.0330B1	1/2"	1/2"	1/4"	35	350	VMDI A35-030-B1	90	190	42	25	50	70	35	0,79

MOLLA - SPRING - FEDER: A = 5:50 bar - B = 40:210 bar (Standard) - C = 100:350 bar

REGOLAZIONE
SETTING
EINSTELLUNG

1 = Vite - Screw - Schraube (Standard)
2 = Volantino - Knob - Handrad
3 = Vite+cappellotto - Screw+protection cup - Schraube+Schutzkappe



MONTAGGIO IN LINEA

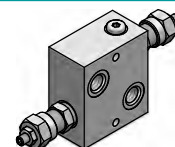
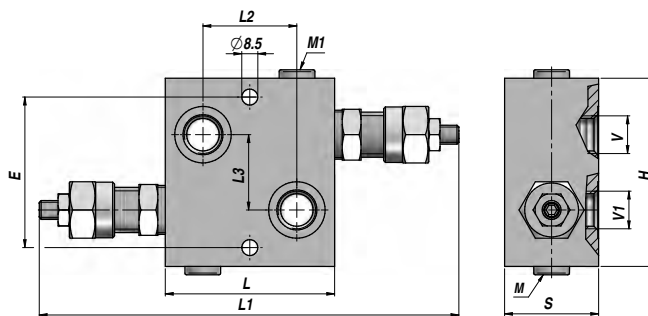
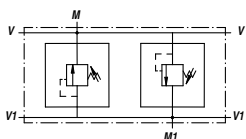
LINE MOUNTING

REIHENMONTAGE

MATERIALE - MATERIAL: ALLUMINIO - ALUMINIUM

VALVOLA ANTIURTO DOPPIA
DUAL CROSS-OVER RELIEF VALVE
SCHOCKVENTIL DOPPELWIRKEND

VMDI 80

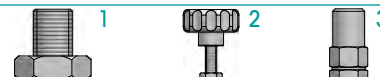


Codice Code Bestell-Nr.	V BSP	V1 BSP	M-M1 BSP	Q MAX l/min	P MAX bar	Tipo Type Typ	L	L1 max	L2	L3	E	H	S	kg
VAG021.0830B1	1/2"	1/2"	1/4"	80	260	VMDI A80-030-B1	90	240	50	40	80	100	50	1,65
VAG021.0840B1	3/4"	3/4"	1/4"	80	260	VMDI A80-040-B1	90	240	50	40	80	100	50	1,60

MOLLA - SPRING - FEDER: A = 5:50 bar - B = 20:260 bar (Standard) - C = 120:350 bar

REGOLAZIONE
SETTING
EINSTELLUNG

1 = Vite - Screw - Schraube (Standard)
2 = Volantino - Knob - Handrad
3 = Vite+cappellotto - Screw+protection cup - Schraube+Schutzkappe



MONTAGGIO IN LINEA

LINE MOUNTING

REIHENMONTAGE

MATERIALE - MATERIAL: ALLUMINIO - ALUMINIUM