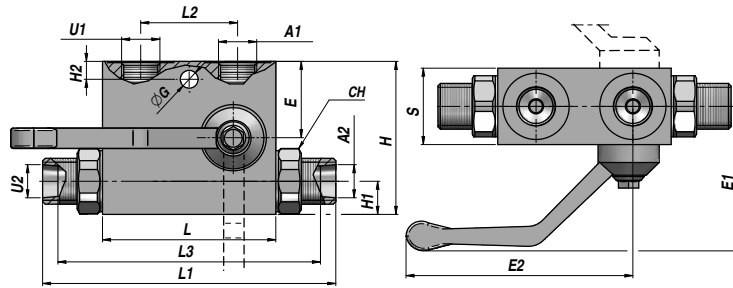
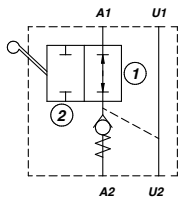


VALVOLA DI BLOCCO PILOTATA DIN 2353 + BY PASS (TENUTA A CONO)
PILOT OPERATED CHECK VALVE DIN 2353 + BY PASS (POPPET TYPE)
VORGESTEUERTES SPERRVENTIL DIN 2353 + BY PASS (KEGELSPERRUNG)

SEMPLICE EFFETTO
SINGLE ACTING
EINFACHWIRKEND

VRPSE-DIN



Codice Code Bestell-Nr.	A1 - U1 BSP	A2 - U2	T	Q MAX l/min	P MAX bar	PILOT RATIO	Tipo Type Typ	L	L1	L2	L3	E	E1 max	E2 max	ØG	H2	CH	H1	H	S	kg
Versione sinistra - Left version - Linke Version																					
VSG333.104504	1/4"	Ø12	M18x1,5	25	350	1:4,5	VRPSE-DIN 010-FL	68	138	38	86	29	65	90	7	7	24	13	60	30	0,95
VSG333.154504	3/8"	Ø12	M18x1,5	25	350	1:4,5	VRPSE-DIN 015-FL	68	138	38	86	29	65	90	7	7	24	13	60	30	0,95
VSG333.204504	3/8"	Ø15	M22x1,5	50	300	1:4	VRPSE-DIN 020-FL	80	140	40	106	25,5	60	100	8,5	9	27	16	60	30	1,12
VSG333.254504	1/2"	Ø15	M22x1,5	50	300	1:4	VRPSE-DIN 025-FL	80	140	40	106	25,5	60	100	8,5	9	27	16	60	30	1,12
Versione destra - Right version - Rechte Version																					
VSG334.104504	1/4"	Ø12	M18x1,5	25	350	1:4,5	VRPSE-DIN 010-FR	68	138	38	86	29	65	90	7	7	24	13	60	30	0,95
VSG334.154504	3/8"	Ø12	M18x1,5	25	350	1:4,5	VRPSE-DIN 015-FR	68	138	38	86	29	65	90	7	7	24	13	60	30	0,95
VSG334.204504	3/8"	Ø15	M22x1,5	50	300	1:4	VRPSE-DIN 020-FR	80	140	40	106	25,5	60	100	8,5	9	27	16	60	30	1,12
VSG334.254504	1/2"	Ø15	M22x1,5	50	300	1:4	VRPSE-DIN 025-FR	80	140	40	106	25,5	60	100	8,5	9	27	16	60	30	1,12

Pressione di apertura - Opening pressure - Öffnungsdruck: bar 0,5 - 4 (Standard) - 8
SENZA DADO E ANELLO DI SERRAGGIO - WITHOUT NUT AND CUTTING RING - OHNE ÜBERWURFMUTTER UND SCHNEIDRING

MONTAGGIO SU CILINDRO
CYLINDER MOUNTING
MONTAGE AM ZYLINDER

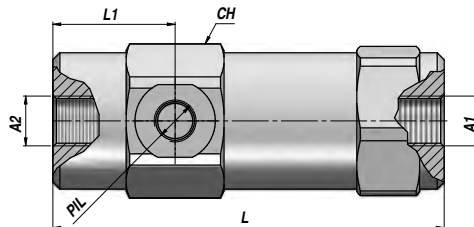
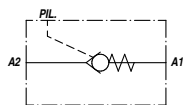
MATERIALE - MATERIAL: ACCIAIO - STEEL - STAHL

ACCESSORI: VEDI PAGINA 112
ACCESSORIES: SEE PAGE 112
ZUBEHÖRE: SIEHE SEITE 112

VALVOLA DI BLOCCO PILOTATA (TENUTA A CONO)
PILOT OPERATED CHECK VALVE (POPPET TYPE)
VORGESTEUERTES SPERRVENTIL (KEGELSPERRUNG)

SEMPLICE EFFETTO
SINGLE ACTING
EINFACHWIRKEND

VBPS



Codice Code Bestell-Nr.	A1 - A2 BSP	PIL BSP	Q MAX l/min	P MAX bar	PILOT RATIO	Tipo Type Typ	L	L1	CH	kg
VSG341.109500	1/4"	1/4"	25	350	1:9,5	VBPS 010	103	32,5	36	0,69
VSG341.206000	3/8"	1/4"	40	350	1:6	VBPS 020	111	35	40	0,93
VSG341.304300	1/2"	1/4"	60	350	1:4,3	VBPS 030	122	38	42	1,08
VSG341.404000	3/4"	1/4"	90	300	1:4,4	VBPS 040	145,5	44,5	55	2,32
VSG341.503500	1"	1/4"	130	260	1:3,5	VBPS 050	164	44,5	55	2,36

Pressione di apertura - Opening pressure - Öffnungsdruck: bar 0,5 (Standard) - 4 - 8

MONTAGGIO IN LINEA
LINE MOUNTING
REIHENMONTAGE

MATERIALE - MATERIAL: ACCIAIO - STEEL - STAHL