

piCLASSIC Si32-3 x2 COAX® Cartridge,



- Patented COAX® technology inside – the most energy efficient ejector technology.
- The Si cartridge offers extra vacuum flow.
- Suitable for handling porous materials or if leakage is present.
- Large capacity range, available with 1 to 6 COAX® Si32 three-stage cartridges.
- Can be easily be upgraded with more capacity if needed.
- Low-weight, configurable and modular design.
- Easy disassembly for maintenance.

General

Material	CuZn, NBR (FKM), PA, SS, Al
Noise level	66 – 77 dBA
Temperature	-10 – 80 °C
Weight, vacuum gauge	50 g
Weight	500 – 550 g
Weight, silencer	120 g

Performance

Feed pressure, max.	0.7 MPa
Feed pressure, optimum	0.6 MPa
Vacuum, max.	75 -kPa

Pneumatic data

Volume, internal	140 cm ³
------------------	---------------------

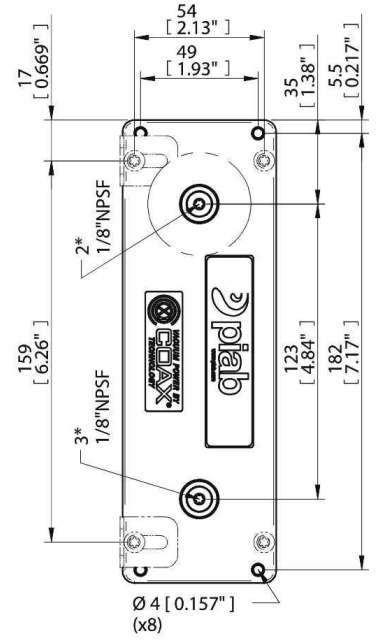
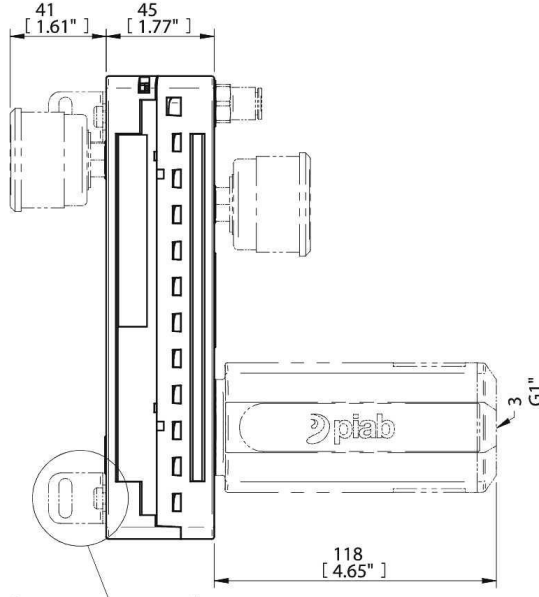
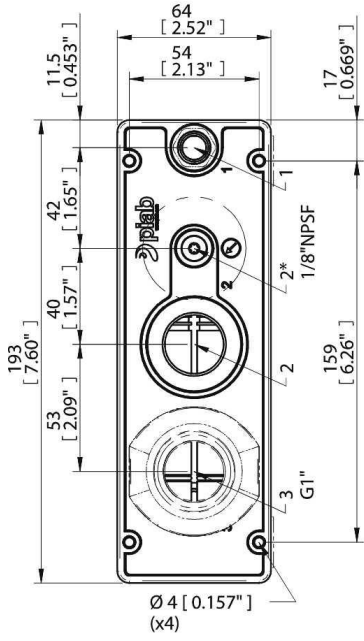
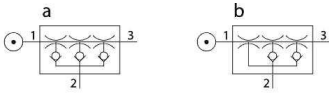
Vacuum flow

Feed pressure MPa	Air consumption NI/s	Vacuum flow (NI/s) at different vacuum levels (-kPa)									Max vacuum -kPa
		0	10	20	30	40	50	60	70		
0.6	3.5	12	7	5.2	3.4	1.8	1.2	1	0.7	75	

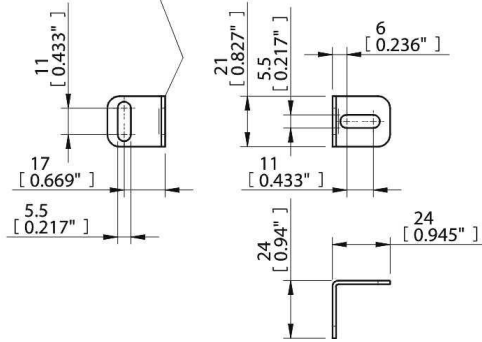
Evacuation time

Feed pressure MPa	Air consumption NI/s	Evacuation time (s/l) to reach different vacuum levels (-kPa)									Max vacuum -kPa
		10	20	30	40	50	60	70			
0.6	3.5	0.01	0.025	0.05	0.09	0.17	0.27	0.4	75		

Dimensional drawings

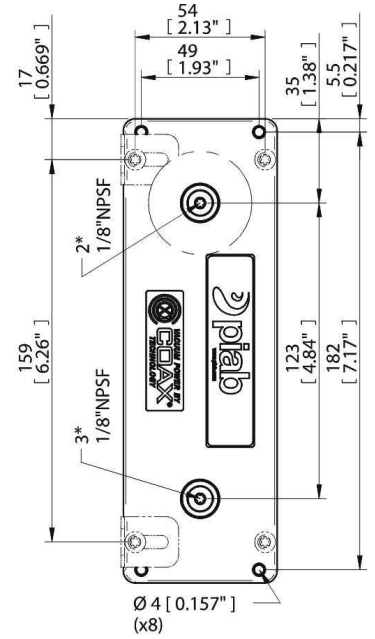
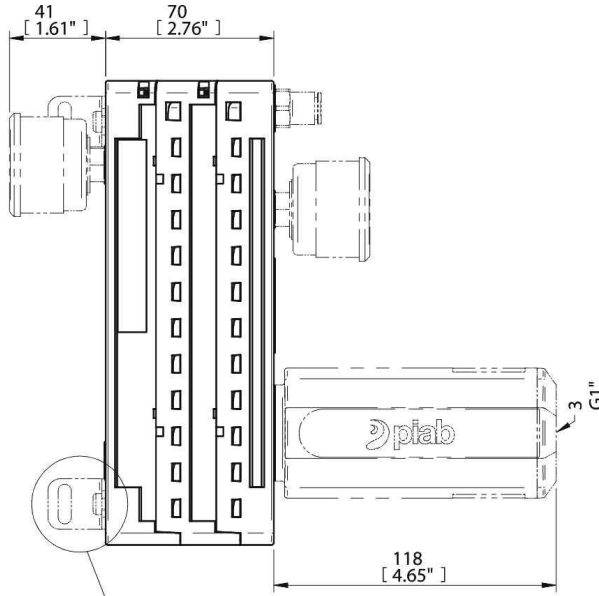
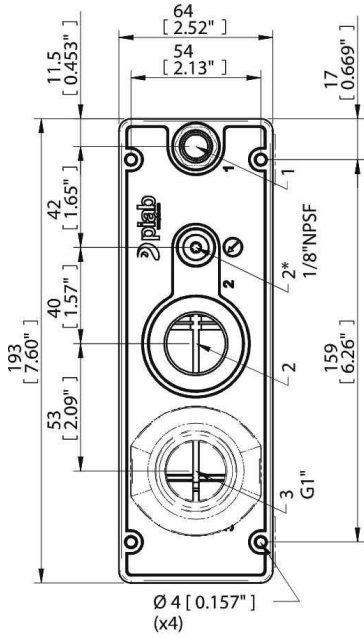
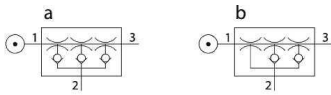


*) Sensing port

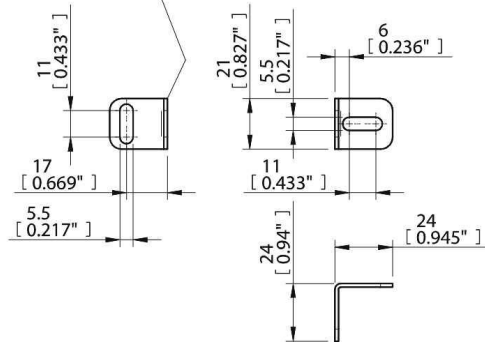


PCL.XXXX.S. **DD**

	1	2
DD	1/8" NPSF	G3/4"
AD	G1/4"	G3/4"
EE	1/4" NPT	3/4" NPT
AB	G1/4"	G1"
08D	Ø8	G3/4"
08E	Ø8	3/4" NPT
10D	Ø10	G3/4"
10E	Ø10	3/4" NPT
10B	Ø10	G1"
12B	Ø12	G1"



*) Sensing port



PCL.XXXX.S. **AD**

	1	2
AD	G1/4"	G3/4"
EE	1/4" NPT	3/4" NPT
AB	G1/4"	G1"
08D	Ø8	G3/4"
08E	Ø8	3/4" NPT
10D	Ø10	G3/4"
10E	Ø10	3/4" NPT
10B	Ø10	G1"
12B	Ø12	G1"

