

# Data sheet

## Brass mini ball valve G 3/4" Female thread,PN 15

**Item number:**

KH 34 MK



Example illustration

## Item description

**Materials:**

Housing: chrome-plated brass, ball: hard chromium plated brass, seal: PTFE / NBR

**Temperature range:**

0°C to +90°C

**Operating range:**

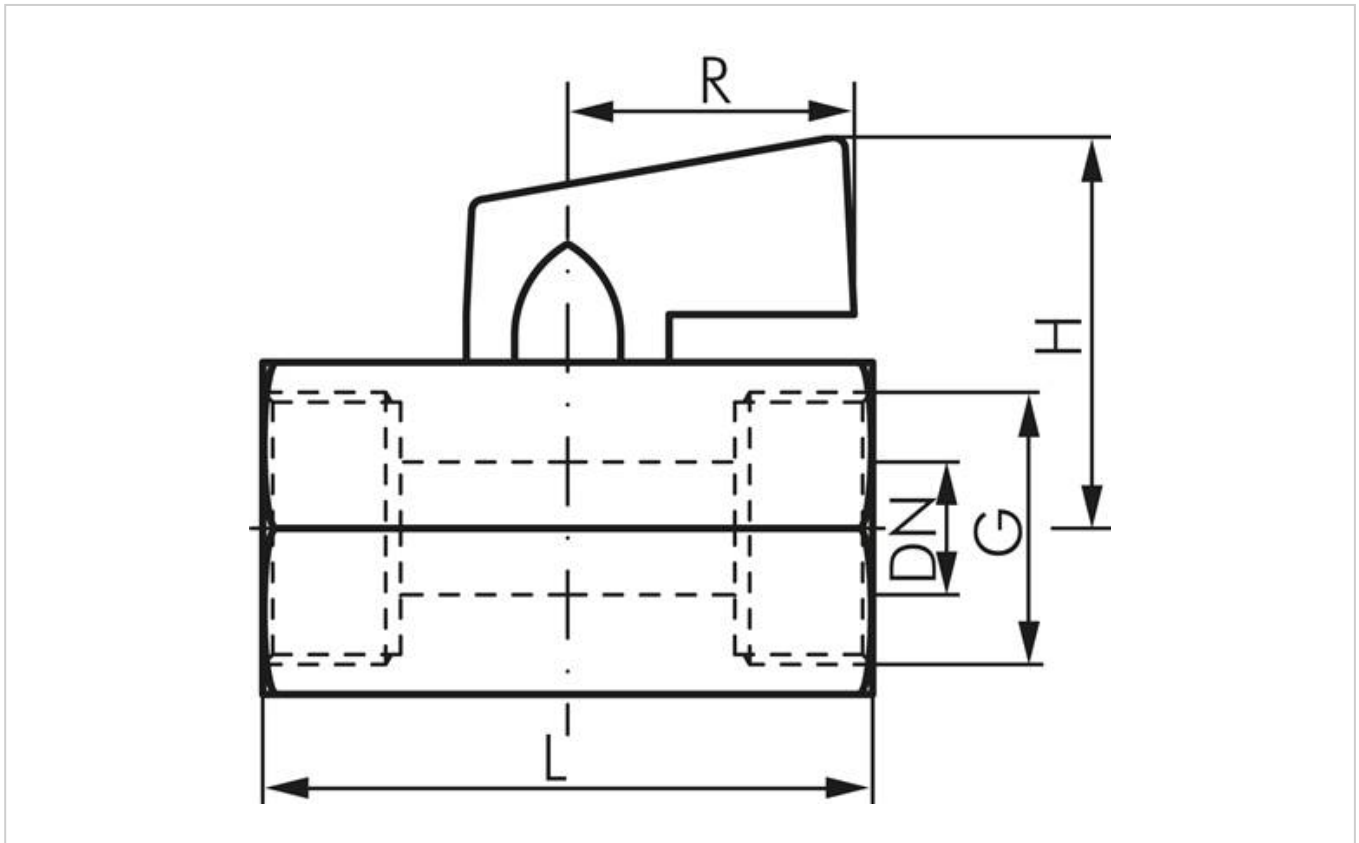
Water (no steam), neutral, gaseous and non-aggressive, liquid media, mineral oils, compressed air, vacuum (max. -0.9 bar)

## Properties

<b>Version</b>	Female thread
<b>Actuation</b>	Butterfly handle
<b>Thread G</b>	G 3/4"
<b>Thread G</b>	G 3/4" (female thread)
<b>DN [mm]</b>	12
<b>L [mm]</b>	54
<b>PN [bar]</b>	-0.9 to 15
<b>H [mm]</b>	32,0
<b>R [mm]</b>	22

**Further information:**

<b>Weight</b>	195 g / Pcs
<b>GTIN</b>	4050571420345
<b>Customs duty number</b>	84818081
<b>RoHS compliant</b>	Yes

**Drawing:**

Drawing: Female thread, toggle

More information on this item and the process for ordering it can be found in our online shop  
<https://www.landefeld.de> under item number **KH 34 MK**.

Landefeld Druckluft und Hydraulik GmbH · Konrad-Zuse-Straße 1 · 34123 Kassel · Germany

*All data are to be understood as non-binding reference values! We do not assume liability for any data selection not confirmed in writing. Unless otherwise specified, pressure values refer to liquids from Group II at +20°C.*

As of: 31.05.2022