

Data sheet

LANDEFELD

Brass mini ball valve G 1/4" Female thread,PN 15

Item number:

KH 14 MK



Example illustration

Item description

Materials:

Housing: chrome-plated brass, ball: hard chromium plated brass, seal: PTFE / NBR

Temperature range:

0°C to +90°C

Operating range:

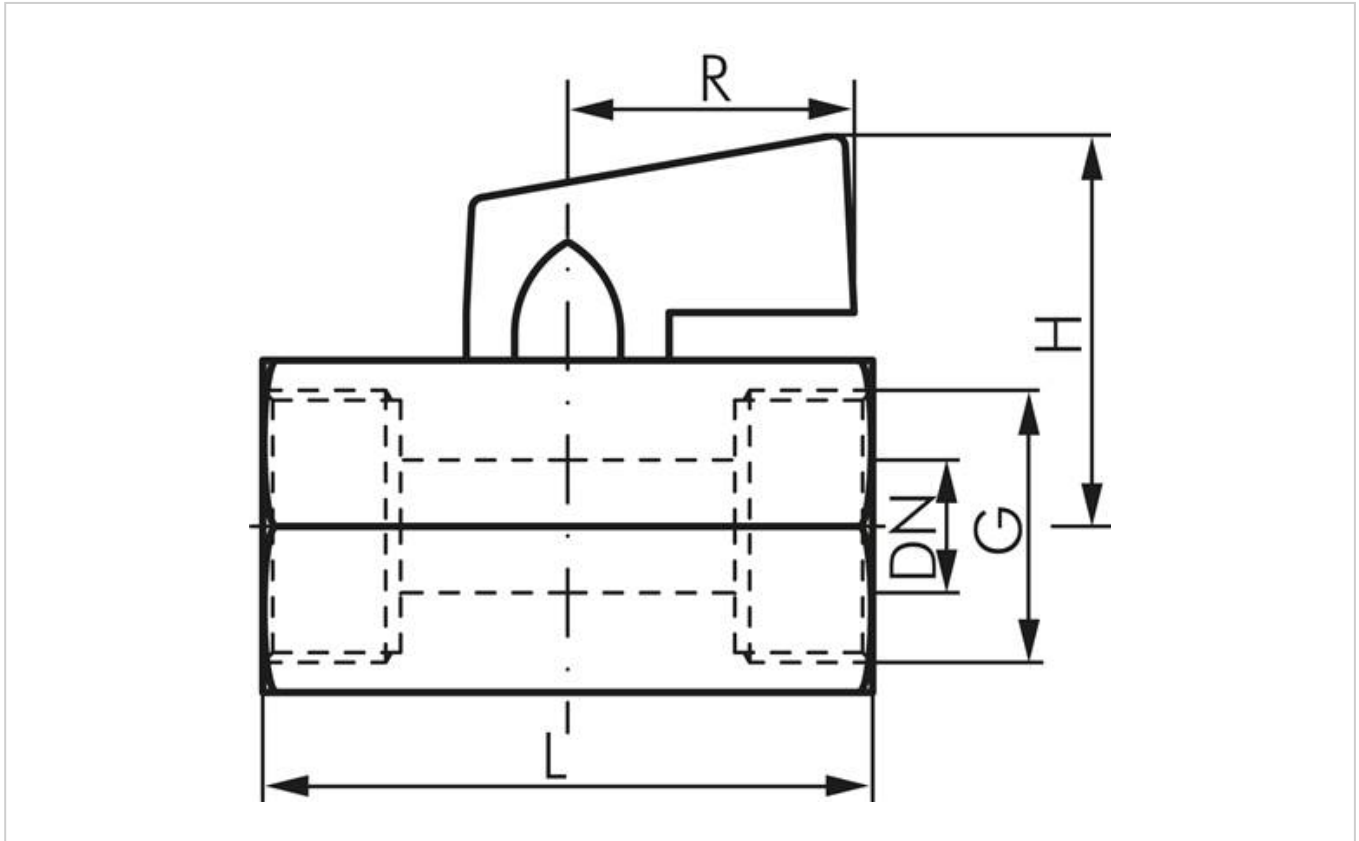
Water (no steam), neutral, gaseous and non-aggressive, liquid media, mineral oils, compressed air, vacuum (max. -0.9 bar)

Properties

Version	Female thread
Actuation	Butterfly handle
Thread G	G 1/4"
Thread G	G 1/4" (female thread)
DN [mm]	8
L [mm]	40
PN [bar]	-0.9 to 15
H [mm]	27,5
R [mm]	22

Further information:

Weight	100 g / Pcs
GTIN	4050571410339
Customs duty number	84818081
RoHS compliant	Yes

Drawing:

Drawing: Female thread, toggle

More information on this item and the process for ordering it can be found in our online shop
<https://www.landefeld.de> under item number **KH 14 MK**.

Landefeld Druckluft und Hydraulik GmbH · Konrad-Zuse-Straße 1 · 34123 Kassel · Germany

All data are to be understood as non-binding reference values! We do not assume liability for any data selection not confirmed in writing. Unless otherwise specified, pressure values refer to liquids from Group II at +20°C.

As of: 31.05.2022