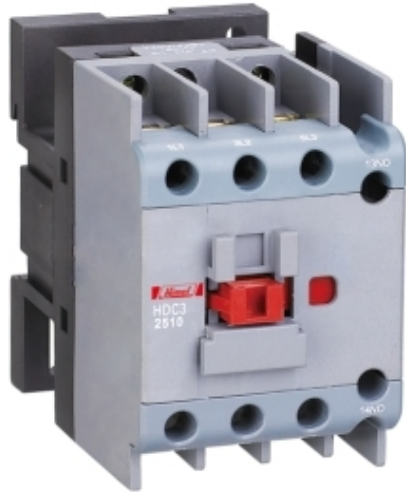


## Product data sheet

## HDC32511E7

### Characteristics

Contactor, HDC3-2511, 48 V, 50/60 Hz



### Main

Range of product	HDC3
Product or component type	Contactor
Contactor application	Non-reversing
Poles description	3P
[Ith] conventional free air thermal current	40 A

### Complementary

Utilisation category	AC-3 AC-4
[In] rated current	25 A
[Uc] control circuit voltage	48 V AC 50/60 Hz
Auxiliary contact composition	1 NO + 1 NC
[Ui] rated insulation voltage	690 V
[Ie] rated operational current	25 A at 380/400 V AC-3 18 A at 660/690 V AC-3 8.5 A at 380/400 V AC-4 4.4 A at 660/690 V AC-4
Motor power kW	11 kW at 380/400 V AC-3 15 kW at 660/690 V AC-3 5.5 kW at 380/400 V AC-4 4 kW at 660/690 V AC-4

### Environment

Installation category	III
Pollution degree	3
Ambient air temperature for operation	-5...40 °C
Average ambient air temperature for operation	= 35 °C (average over 24 hours)
Ambient air temperature for storage	-25...55 °C
Operating altitude	2000 m
Standards	IEC 60947-4-1
Product certifications	CB CE SEMKO
IP degree of protection	IP20
Relative humidity	0...50 % at 0...40 °C 0...90 % at 0...20 °C

### Packing Units

Unit Type of Package 1

PCE

---

Number of Units in Package 1

1

---