

HDB6VR Electromagnetic Type Residual Current Switch

Standard: IEC/EN 61008-1
RCCB Type: A C ,A
Sensitivity: 30, 100, 300mA



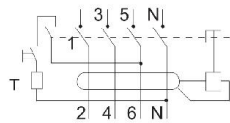
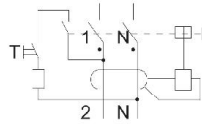
Function

HDB6VR Electromagnetic Type Residual Current Switch combine the following functions:

- Protection for users against indirect contacts
- Additional protection for users against direct contacts (30mA)
- Protection for electrical installations against insulation faults (fire hazard, etc)

Order Information

Type	Width (in mod.of 9mm)	Rating (A)	Sensitivity (mA)	Reference			
				AC type	A type		
2P 63AF	4	10	30	HDB6VR210SC	HDB6VR210SA		
			100	HDB6VR210YC	HDB6VR210YA		
			300	HDB6VR210TC	HDB6VR210TA		
		16	30	HDB6VR216SC	HDB6VR216SA		
			100	HDB6VR216YC	HDB6VR216YA		
			300	HDB6VR216TC	HDB6VR216TA		
		25	30	HDB6VR225SC	HDB6VR225SA		
			100	HDB6VR225YC	HDB6VR225YA		
			300	HDB6VR225TC	HDB6VR225TA		
		40	30	HDB6VR240SC	HDB6VR240SA		
			100	HDB6VR240YC	HDB6VR240YA		
			300	HDB6VR240TC	HDB6VR240TA		
63	30	HDB6VR263SC	HDB6VR263SA				
	100	HDB6VR263YC	HDB6VR263YA				
	300	HDB6VR263TC	HDB6VR263TA				
100AF	80	30	HDB6VR280SC	HDB6VR280SA			
		100	HDB6VR280YC	HDB6VR280YA			
		300	HDB6VR280TC	HDB6VR280TA			
		100	30	HDB6VR2100SC	HDB6VR2100SA		
			100	HDB6VR2100YC	HDB6VR2100YA		
			300	HDB6VR2100TC	HDB6VR2100TA		
4P 63AF	8	10	30	HDB6VR410SC	HDB6VR410SA		
			100	HDB6VR410YC	HDB6VR410YA		
			300	HDB6VR410TC	HDB6VR410TA		
		16	30	HDB6VR416SC	HDB6VR416SA		
			100	HDB6VR416YC	HDB6VR416YA		
			300	HDB6VR416TC	HDB6VR416TA		
		25	30	HDB6VR425SC	HDB6VR425SA		
			100	HDB6VR425YC	HDB6VR425YA		
			300	HDB6VR425TC	HDB6VR425TA		
		40	30	HDB6VR440SC	HDB6VR440SA		
			100	HDB6VR440YC	HDB6VR440YA		
			300	HDB6VR440 TC	HDB6VR440TA		
		63	30	HDB6VR463 SC	HDB6VR463S A		
			100	HDB6VR463 YC	HDB6VR463Y A		
			300	HDB6VR463 TC	HDB6VR463TA		
		100AF	80	30	HDB6VR480 SC	HDB6VR480S A	
				100	HDB6VR480 YC	HDB6VR480Y A	
				300	HDB6VR480 TC	HDB6VR480TA	
				100	30	HDB6VR4100SC	HDB6VR4100SA
					100	HDB6VR4100YC	HDB6VR4100YA
					300	HDB6VR4100TC	HDB6VR4100TA



Final Distribution

HDB6VR Electromagnetic Type Residual Current Switch

Standard: IEC/EN 61008-1
RCCB Type: AC,A
Sensitivity: 30, 100, 300mA

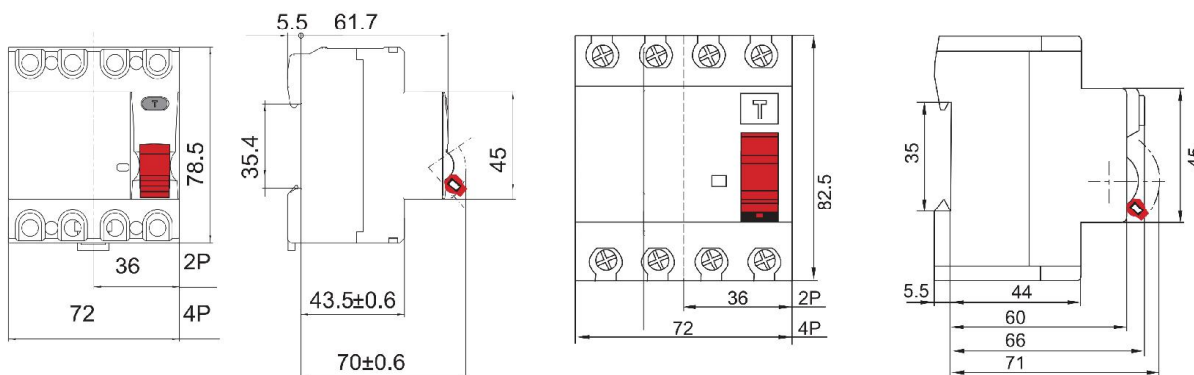


Final Distribution

RCCB	HDB6VR Electromagnetic Type Residual Current Switch			
Electrical Features	Standard	IEC/EN 61008-1		
	Certification	TUV,CE, CB		
	Type	AC,A		
	Poles	2P, 4P		
	Rated Current In	10,16,25,32,40,63,80,100 A		
	Rated Voltage Ue	230/400V AC		
	Insulation Voltage Ui	500V		
	Sensitivity	30,100,300mA		
Mechanical Features	Electrical Durability	1000 times		
	Mechanical Durability	2000 times		
	Overload or Short Circuit Protection	no		
	Tripping Indication	Instantaneous, rated residual operated current, unadjustable		
	Fault Current Indicator	Mechanical indication in the front		
	Protection Degree	2		
	Tropicalization	Treatment 2		
	Ambient Temperature	-25°C~+40°C		
Connection	Up to 25mm ² cables(In≤63A)	Up to 35mm ² cables(In>63A)		
Installation	Rate current(A)	Screw	Rated Torque (Nm)	Limiting Torque (Nm)
	25-100	M5	2.0	4.5
Mounting	35mm Din-rail			
Power source Auxiliary	No need			

Overall Dimensions

Unit:mm



HDB6VR-63

HDB6VR-100