

# Suction cup F33 Silicone FCM, G1/4" male, 99.14.237



- Designed for opening bags in bag filling stations.
- Also suitable to handle thin and sensitive sheets, such as paper and plastic films.
- The thin, conformable lip and clever cleat pattern prevent sensitive object/sheet to get sucked in and damaged while giving enhanced lifting force.
- FDA 21 CFR 177.2600 & EU 1935/2004 approved silicone material.

## General

Curve radius	1.38 in
Movement, vertical max.	0.06 in
Application	Bag opening/thin paper - slip sheets/film, Food contact materials (FDA & EU), non-detectable
Material	Silicone (SIL FDA)
Suction cup model	F
Suction cup shape	Flat
Volume	0.13 in <sup>3</sup>
Weight	0.19 oz

## Fitting

Fitting size	1/4"
Fitting style	Male
Fitting type	G-thread
Fitting option	None

## Dimension

Height	1.52 in
Outer diameter	1.28 in
Outer diameter, actuated	1.33 in

## Performance — lifting forces

		
6 -inHg	3.6 lbf	3.03 lbf
18 -inHg	8.54 lbf	7.31 lbf
27 -inHg	11 lbf	9.33 lbf

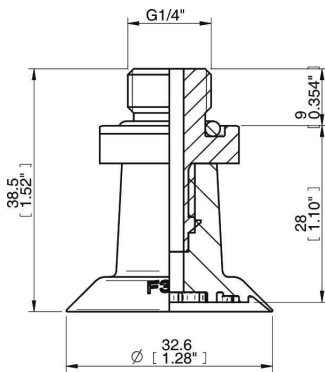
## Material

	Silicone (SIL FDA)
Color	Transparent
Hardness	50 °Shore A
Temperature	-40 – 392 °F

## Material resistance

	Silicone (SIL FDA)
Alcohol	++
Concentrated acids	-
Ethanol	N/A
Hydrolysis	+
Methanol	N/A
Oil	-
Oxidation	+++
Gasoline	-
Wear resistance	++
Weather and ozone	+++

## Dimensional drawings



## Values specified in the data sheet are tested at:

Room temperature	(20°C [68°F] ± 3°C [5.5°F])
Standard atmosphere	(101.3 [29.9 inHg] ± 1.0 kPa [0.3 inHg])
Relative humidity	0-100%
Compressed air quality	DIN ISO 8573-1 class 4

## Spare parts

	Part no.
Suction cup F33 Silicone FCM	02.00.328
Fitting G1/4" male	02.01.967

## Accessories

	Part no.
Fitting 1/8" NPSF female	02.01.969