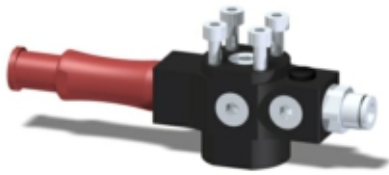


## VGS™ 3010 VGS3010.AM.00.BA



- ▶ Patented COAX® technology
- ▶ VGS™ allows easy installation and flexible positioning with several mounting options.
- ▶ VGS™ is compatible with any suction cup with G3/8" male fitting from Piab's assortment. More information about a chosen suction cup or other available suction cups for a specific application can be found at; [www.piab.com](http://www.piab.com)
- ▶ The three-stage cartridge will give extra high initial
- ▶ vacuum flow, which is suitable in high speed applications.
- ▶ Xi cartridge chosen when there is need of high flow and deep vacuum.

### Technical data

Description	Unit	Value
Feed pressure, max.	Mpa	0.7
Noise level range	dBA	60-74
Temperature range	°C	10-80
Weight	g	164
Material	-	PP, PA, NBR, AL, SS

### Vacuum flow COAX® cartridge MINI Xi10-3, non-return valve

Feed pressure*	Air consumption	Vacuum flow (NI/s) at different vacuum levels (-kPa)											Max vacuum
		0	10	20	30	40	50	60	70	80	90	-kPa	
0.5 MPa	0.46 NI/s	1.43	0.70	0.50	0.33	0.19	0.15	0.11	0.07	0.04	0.011	94	

\*For vacuum flows at other feed pressures, see COAX® cartridge data sheets. \*Feed pressure tolerance, +/- 0.01 MPa

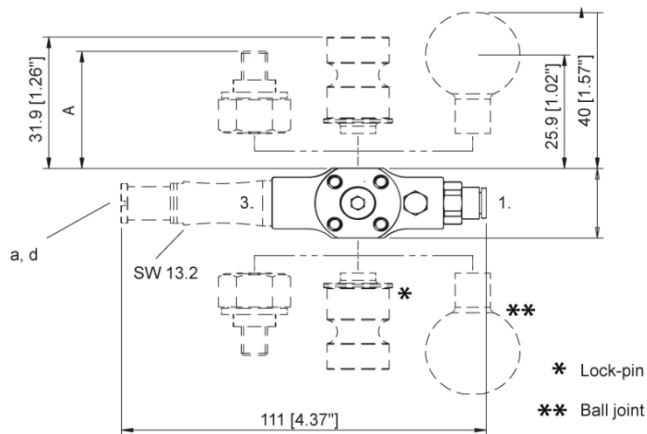
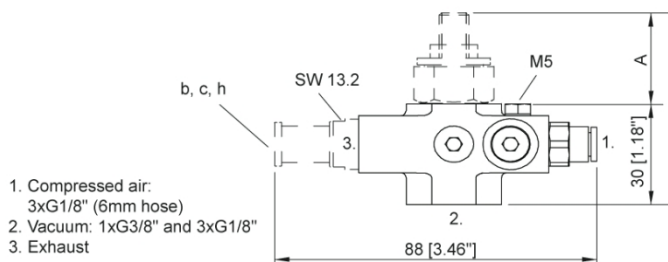
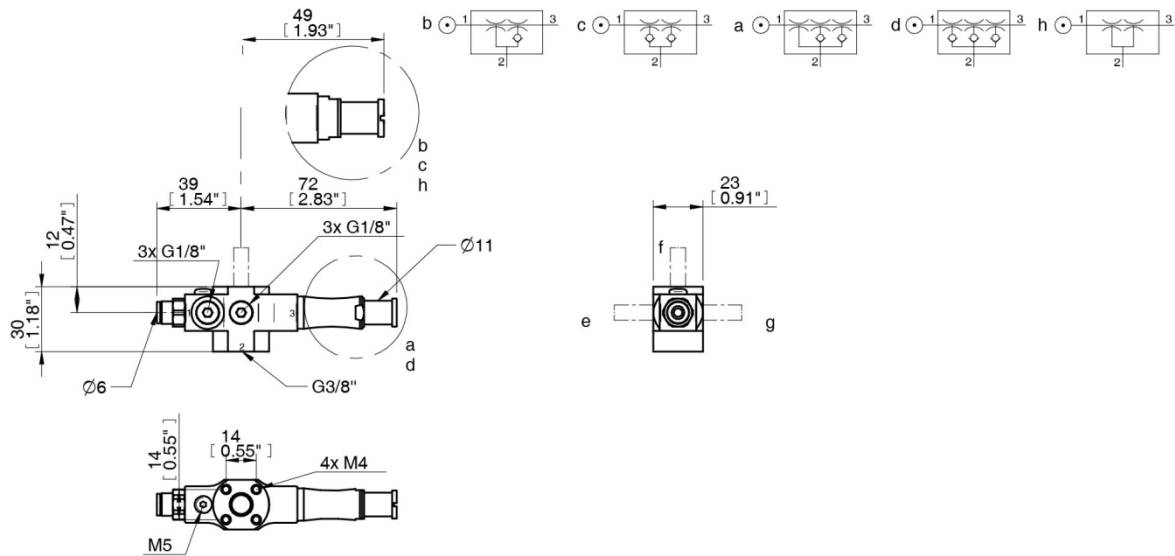
### Evacuation time COAX® cartridge MINI Xi10-3, non-return valve

Feed pressure*	Air consumption	Evacuation time (s/l) to reach different vacuum levels (-kPa)										Max vacuum
		10	20	30	40	50	60	70	80	90	-kPa	
0.5 MPa	0.46 NI/s	0.09	0.26	0.50	0.90	1.5	2.2	3.4	5.2	8.8	94	

\*For evacuation times at other feed pressures, see COAX® cartridge data sheets. \*Feed pressure tolerance, +/- 0.01 MPa

## Dimensional drawing

d = COAX® cartridge MINI Xi10-3, non-return valve



Mounting	A (mm)
M8 / 16	16
M6 / 22	22
M8 / 27	27

**Ordering information**

<b>Description</b>	<b>Product code</b>
VGS™3010, COAX® cartridge MINI Xi10-3, non-return valve, 4x M4 top, flush mount, No suction cup	VGS3010.AM.00.BA