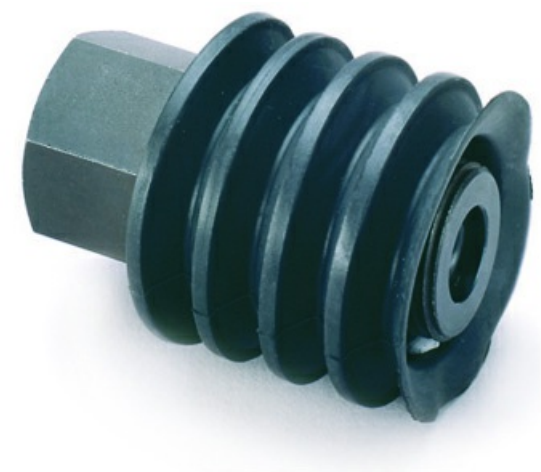


# Ball joint G1/2", 33.50.066



- Ball joint fittings could be used when lifting sheet metal with a device using several suction cups.
- To avoid bending stress a suction cup can be fitted with a balljoint.

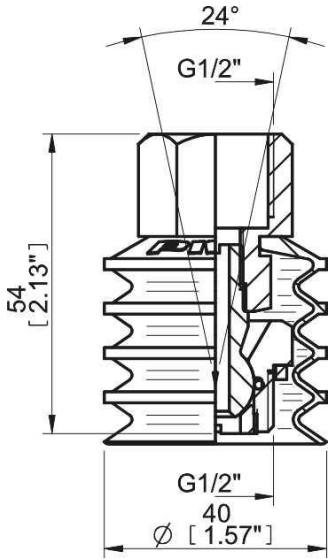
## General

Material	PA, Steel, Chloroprene (CR), Nitrile (NBR)
Temperature	-40 – 230 °F
Weight	3.88 oz

## Mechanical data

Bending torque, max.	92.2 lb ft
Load, max.	50 kg
Load, vertical, max.	112 lbf
Movement, angular	±12 °

## Dimensional drawings



## Accessories

	Part no.
Connector ext-int G1/2"	31.07.757