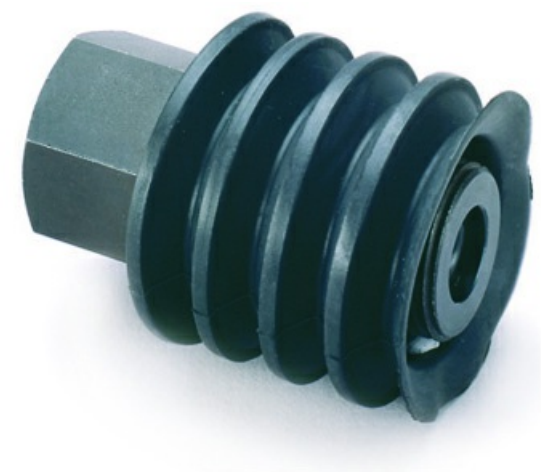


# Ball joint G1/8", 33.50.065



- Ball joint fittings could be used when lifting sheet metal with a device using several suction cups.
- To avoid bending stress a suction cup can be fitted with a balljoint.

## General

|             |                                            |
|-------------|--------------------------------------------|
| Material    | PA, Steel, Chloroprene (CR), Nitrile (NBR) |
| Temperature | -40 ~ 230 °F                               |
| Weight      | 0.71 oz                                    |

## Mechanical data

|                      |            |
|----------------------|------------|
| Bending torque, max. | 10.3 lb ft |
| Load, max.           | 25 kg      |
| Load, vertical, max. | 56.2 lbf   |
| Movement, angular    | ±12 °      |

## Dimensional drawings

