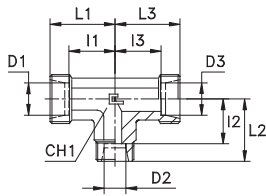
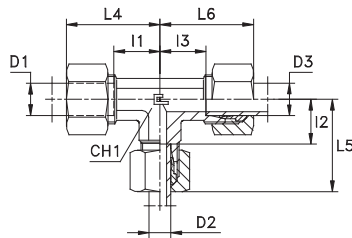


# REDUCING TEE

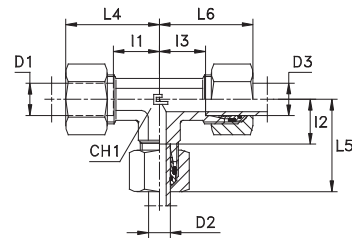
Type: 1045...1 Body



Type: 1045.. B3 Ring



Type: 1045...4 B4 Ring



Series DIN	10.... [bar]	11.... [bar]	Ordering Body	Ordering Equipped B3	Ø Tube			L1	L2	L3	L4	L5	L6	I1	I2	I3	CH1	Ordering Equipped B4
					D1	D2	D3											
L	500		104503.1	104503	6	8	6	21	21	21	29	29	29	14	14	14	12	104503.4
			104504.1	104504	8	6	8	21	21	21	29	29	29	14	14	14	12	104504.4
			104505.1	104505	6	10	6	21	22	21	29	30	29	14	15	14	14	104505.4
			104506.1	104506	8	10	8	21	22	21	29	30	29	14	15	14	14	104506.4
			104507.1	104507	10	6	10	22	21	22	30	29	30	15	14	15	14	104507.4
			104508.1	104508	10	8	10	22	21	22	30	29	30	15	14	15	14	104508.4
	104509.1	104509	10	10	6	22	22	21	30	30	29	15	15	14	14	104509.4		
	104510.1	104510	8	12	8	23	24	23	31	32	31	16	17	16	17	104510.4		
	104511.1	104511	12	6	12	24	23	24	32	31	32	17	16	17	17	104511.4		
	104512.1	104512	12	8	8	24	23	23	32	31	31	17	16	16	17	104512.4		
	104513.1	104513	12	8	12	24	23	24	32	31	32	17	16	17	17	104513.4		
	104514.1	104514	12	10	10	24	24	24	32	32	32	17	17	17	17	104514.4		
	104515.1	104515	12	10	12	24	24	24	32	32	32	17	17	17	17	104515.4		
	104516.1	104516	12	12	10	24	24	24	32	32	32	17	17	17	17	104516.4		
	104517.1	104517	10	15	10	27	28	27	35	36	35	20	21	20	19	104517.4		
	104518.1	104518	12	15	12	27	28	27	35	36	35	20	21	20	19	104518.4		
	104519.1	104519	15	6	15	28	25	28	36	33	36	21	18	21	19	104519.4		
	104520.1	104520	15	10	15	28	27	28	36	35	36	21	20	21	19	104520.4		
	104521.1	104521	15	12	12	28	27	27	36	35	35	21	20	20	19	104521.4		
	104522.1	104522	15	12	15	28	27	28	36	35	36	21	20	21	19	104522.4		
	104523.1	104523	15	15	12	28	28	27	36	36	35	21	21	20	19	104523.4		
	104524.1	104524	12	18	12	30	31	30	38	40	38	23	23	23	24	104524.4		
	104525.1	104525	18	10	10	31	30	30	40	38	38	23,5	23	23	24	104525.4		
	104526.1	104526	18	10	18	31	30	31	40	38	40	23,5	23	23,5	24	104526.4		
	104527.1	104527	18	12	18	31	30	31	40	38	40	23,5	23	23,5	24	104527.4		
	104528.1	104528	18	15	18	31	31	31	40	39	40	23,5	24	23,5	24	104528.4		
	104529.1	104529	18	18	10	31	31	30	40	40	38	23,5	23,5	23	24	104529.4		
	104530.1	104530	22	10	22	35	33	35	44	41	44	27,5	26	27,5	27	104530.4		
	104531.1	104531	22	12	22	35	33	35	44	41	44	27,5	26	27,5	27	104531.4		
	104532.1	104532	22	15	15	35	34	34	44	42	42	27,5	27	27	27	104532.4		
	104533.1	104533	22	15	22	35	34	35	44	42	44	27,5	27	27,5	27	104533.4		
	104534.1	104534	22	18	18	35	34	34	44	43	43	27,5	26,5	26,5	27	104534.4		
	104535.1	104535	22	18	22	35	34	35	44	43	44	27,5	26,5	27,5	27	104535.4		
	104536.1	104536	22	22	18	35	35	34	44	44	43	27,5	27,5	26,5	27	104536.4		
	104537.1	104537	28	10	28	38	36	38	47	44	47	30,5	29	30,5	36	104537.4		
	104538.1	104538	28	12	28	38	36	38	47	44	47	30,5	29	30,5	36	104538.4		
104539.1	104539	28	15	28	38	37	38	47	45	47	30,5	30	30,5	36	104539.4			
104540.1	104540	28	18	28	38	37	38	47	46	47	30,5	29,5	30,5	36	104540.4			
104541.1	104541	28	22	22	38	38	38	47	47	47	30,5	30,5	30,5	36	104541.4			
104542.1	104542	28	22	28	38	38	38	47	47	47	30,5	30,5	30,5	36	104542.4			
S	800	630	104543.1	104543	10	6	10	25	25	25	34	33	34	17,5	18	17,5	17	104543.4
			104544.1	104544	12	8	8	29	25	25	38	33	33	21,5	18	18	17	104544.4
			104545.1	104545	12	8	12	29	25	29	38	33	38	21,5	18	21,5	17	104545.4
	104546.1	104546	12	10	12	29	25	29	38	34	38	21,5	17,5	21,5	17	104546.4		
	630	104547.1	104547	12	16	12	31	33	31	40	43	40	23,5	24,5	23,5	24	104547.4	
		104548.1	104548	16	6	16	33	31	33	43	39	43	24,5	24	24,5	24	104548.4	
		104549.1	104549	16	8	16	33	31	33	43	39	43	24,5	24	24,5	24	104549.4	
		104550.1	104550	16	10	16	33	31	33	43	40	43	24,5	23,5	24,5	24	104550.4	
		104551.1	104551	16	12	16	33	31	33	43	40	43	24,5	23,5	24,5	24	104551.4	
		104552.1	104552	16	20	16	36	37	36	46	48	46	27,5	26,5	27,5	27	104552.4	
	420	104553.1	104553	20	10	20	37	34	37	48	43	48	26,5	26,5	26,5	27	104553.4	
		104554.1	104554	20	12	20	37	34	37	48	43	48	26,5	26,5	26,5	27	104554.4	
		104555.1	104555	20	16	20	37	36	37	48	46	48	26,5	27,5	26,5	27	104555.4	
		104556.1	104556	20	25	20	40	42	40	51	54	51	29,5	30	29,5	36	104556.4	
		104557.1	104557	25	16	25	42	39	42	54	49	54	30	30,5	30	36	104557.4	
		104558.1	104558	25	20	25	42	40	42	54	51	54	30	29,5	30	36	104558.4	
		104559.1	104559	25	30	25	47	49	47	59	62	59	35	35,5	35	41	104559.4	

**Note:** If you wish to order AISI 316 stainless steel fittings, please change the first two digits from 10.... to 11....  
 If you wish to order AISI 316 stainless steel fittings with AISI 304 stainless steel nuts, please change the first two digits from 10.... to 14....  
 Items available on request only.