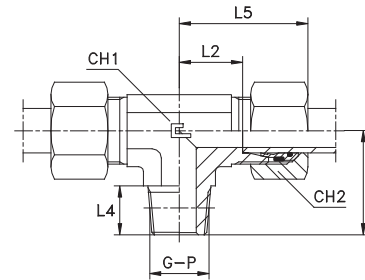
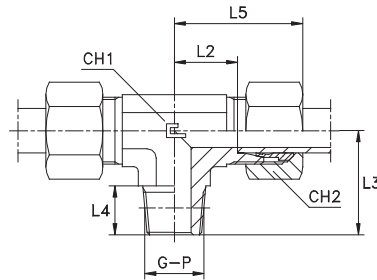
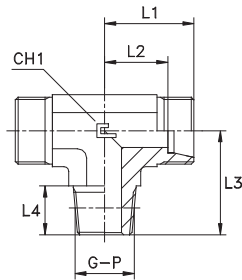


**MALE STUD BRANCH TEE**  
Thread BSP Taper - Thread NPT

Type: 1025...1 Body  
Type: 1026...1 Body

Type: 1025... B3 Ring  
Type: 1026... B3 Ring

Type: 1025...4 B4 Ring  
Type: 1026...4 B4 Ring



Series DIN	10.... bar	11.... bar	Ordering Body	Ordering Equipped B3	Ø Tube	G	L1	L2	L3	L4	L5	CH1	CH2	Ordering Equipped B4
LL	100	100	102501.1	102501	4	1/8	15	11	17	8	21	9	10	-
			102502.1	102502	6	1/8	15	9.5	17	8	21	9	12	-
			102503.1	102503	8	1/8	17	11.5	20	8	23	12	14	-
L	315	315	102504.1	102504	6	1/8	19	12	20	8	27	12	14	102504.4
			102505.1	102505	8	1/4	21	14	26	12	29	12	17	102505.4
			102506.1	102506	10	1/4	22	15	27	12	30	14	19	102506.4
			102507.1	102507	12	3/8	24	17	28	12	32	17	22	102507.4
			102508.1	102508	15	1/2	28	21	34	14	36	19	27	102508.4
			102509.1	102509	18	1/2	31	23.5	36	14	40	24	32	102509.4
	160	160	102510.1	102510	22	3/4	35	27.5	42	16	44	27	36	102510.4
			102511.1	102511	28	1	38	30.5	48	18	47	36	41	102511.4
			102512.1	102512	35	1 1/4	45	34.5	54	20	56	41	50	102512.4
			102513.1	102513	42	1 1/2	51	40	61	22	63	50	60	102513.4
S	630	630	102514.1	102514	6	1/4	23	16	26	12	31	12	17	102514.4
			102515.1	102515	8	1/4	24	17	27	12	32	14	19	102515.4
			102516.1	102516	10	3/8	25	17.5	28	12	34	17	22	102516.4
			102517.1	102517	12	3/8	29	21.5	28	12	38	17	24	102517.4
			102518.1	102518	14	1/2	30	22	32	14	40	19	27	102518.4
	400	400	102519.1	102519	16	1/2	33	24.5	32	14	43	24	30	102519.4
			102520.1	102520	20	3/4	37	26.5	42	16	48	27	36	102520.4
			102521.1	102521	25	1	42	30	48	18	54	36	46	102521.4
			102522.1	102522	30	1 1/4	49	35.5	54	20	62	41	50	102522.4
			102523.1	102523	38	1 1/2	57	41	61	22	72	50	60	102523.4

Note: If you wish to order AISI 316 stainless steel fittings, please change the first two digits from 10.... to 11....  
If you wish to order AISI 316 stainless steel fittings with AISI 304 stainless steel nuts, please change the first two digits from 10.... to 14....  
Items not included in the ISO 8434-1 Norm available on scheduled orders only

Series DIN	10.... bar	11.... bar	Ordering Body	Ordering Equipped B3	Ø Tube	P	L1	L2	L3	L4	L5	CH1	CH2	Ordering Equipped B4
L	315	315	102604.1	102604	6	1/8	19	12	20	10	27	12	14	102604.4
			102605.1	102605	8	1/4	21	14	26	15	29	12	17	102605.4
			102606.1	102606	10	1/4	22	15	27	15	30	14	19	102606.4
			102607.1	102607	12	3/8	24	17	28	15	32	17	22	102607.4
			102608.1	102608	15	1/2	28	21	34	19.5	36	19	27	102608.4
			102609.1	102609	18	1/2	31	23.5	36	19.5	40	24	32	102609.4
S	630	630	102610.1	102610	22	3/4	35	27.5	42	20	44	27	36	102610.4
			102611.1	102611	28	1	38	30.5	48	25	47	36	41	102611.4
			102612.1	102612	35	1 1/4	45	34.5	57	25.5	56	41	50	102612.4
			102613.1	102613	42	1 1/2	51	40	61	26	63	50	60	102613.4
			102614.1	102614	6	1/4	23	16	26	15	31	12	17	102614.4
	400	400	102615.1	102615	8	1/4	24	17	27	15	32	14	19	102615.4
			102616.1	102616	10	3/8	25	17.5	28	15	34	17	22	102616.4
			102617.1	102617	12	3/8	29	21.5	28	15	38	17	24	102617.4
			102618.1	102618	14	1/2	30	22	34	19.5	40	19	27	102618.4
			102619.1	102619	16	1/2	33	24.5	36	19.5	43	24	30	102619.4
315	315	102620.1	102620	20	3/4	37	26.5	42	20	48	27	36	102620.4	
		102621.1	102621	25	1	42	30	48	25	54	36	46	102621.4	
		102622.1	102622	30	1 1/4	49	35.5	57	25.5	62	41	50	102622.4	
		102623.1	102623	38	1 1/2	57	41	61	26	72	50	60	102623.4	

Note: If you wish to order AISI 316 stainless steel fittings, please change the first two digits from 10.... to 11....  
If you wish to order AISI 316 stainless steel fittings with AISI 304 stainless steel nuts, please change the first two digits from 10.... to 14....  
Items not included in the ISO 8434-1 Norm available on scheduled orders only