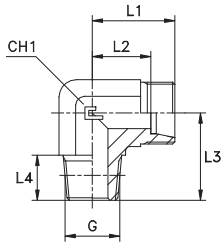


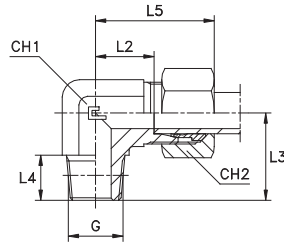
MALE STUD ELBOW

Thread BSP Taper

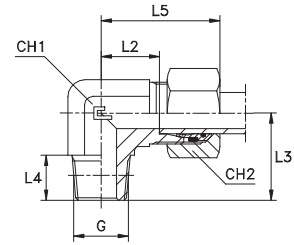
Type: 1020...1 Body



Type: 1020.. B3 Ring



Type: 1020...4 B4 Ring



Series DIN	10.... bar	11.... bar	Ordering Body	Ordering Equipped B3	Ø Tube	G	L1	L2	L3	L4	L5	CH1	CH2	Ordering Equipped B4
LL	100	100	102001.1	102001	4	1/8	15	11	17	8	21	9	10	-
			102002.1	102002	6	1/8	15	9,5	17	8	21	9	12	-
			102003.1	102003	8	1/8	17	11,5	20	8	23	12	14	-
L	315	315	102004.1	102004	6	1/8	19	12	20	8	27	12	14	102004.4
			102005.1	102005	8	1/4	21	14	26	12	29	12	17	102005.4
			102006.1	102006	10	1/4	22	15	27	12	30	14	19	102006.4
			102007.1	102007	12	3/8	24	17	28	12	32	17	22	102007.4
			102008.1	102008	15	1/2	28	21	34	14	36	19	27	102008.4
			102009.1	102009	18	1/2	31	23,5	36	14	40	24	32	102009.4
			102010.1	102010	22	3/4	35	27,5	42	16	44	27	36	102010.4
	160	160	102011.1	102011	28	1	38	30,5	48	18	47	36	41	102011.4
			102012.1	102012	35	1 1/4	45	34,5	54	20	56	41	50	102012.4
			102013.1	102013	42	1 1/2	51	40	61	22	63	50	60	102013.4
S	630	630	102014.1	102014	6	1/4	23	16	26	12	31	12	17	102014.4
			102015.1	102015	8	1/4	24	17	27	12	32	14	19	102015.4
			102016.1	102016	10	3/8	25	17,5	28	12	34	17	22	102016.4
			102017.1	102017	12	3/8	29	21,5	28	12	38	17	24	102017.4
			102018.1	102018	14	1/2	30	22	32	14	40	19	27	102018.4
			102019.1	102019	16	1/2	33	24,5	32	14	43	24	30	102019.4
			102020.1	102020	20	3/4	37	26,5	42	16	48	27	36	102020.4
	400	400	102021.1	102021	25	1	42	30	48	18	54	36	46	102021.4
			102022.1	102022	30	1 1/4	49	35,5	54	20	62	41	50	102022.4
			102023.1	102023	38	1 1/2	57	41	61	22	72	50	60	102023.4
L	315	315	102024.1	102024	6	1/4	21	14	26	12	29	12	14	102024.4
			102025.1	102025	8	1/8	21	14	22	8	29	12	17	102025.4
			102026.1	102026	8	3/8	23	16	28	12	31	17	17	102026.4
			102027.1	102027	8	1/2	26	19	34	14	34	19	17	102027.4
			102028.1	102028	10	1/8	22	15	22	8	30	14	19	102028.4
			102029.1	102029	10	3/8	24	17	28	12	32	17	19	102029.4
			102030.1	102030	10	1/2	27	20	34	14	35	19	19	102030.4
			102031.1	102031	12	1/4	24	17	28	12	32	17	22	102031.4
			102032.1	102032	12	1/2	27	20	34	14	34	19	22	102032.4
			102033.1	102033	15	3/8	28	21	30	12	36	19	27	102033.4
102034.1	102034	18	3/4	34	26,5	42	16	43	27	32	102034.4			
S	630	630	102035.1	102035	12	1/2	28	20,5	32	14	37	19	24	102035.4
			102036.1	102036	14	3/8	30	22	30	12	40	19	27	102036.4
	400	400	102037.1	102037	16	3/8	33	24,5	37	12	43	24	30	102037.4
			102038.1	102038	20	1/2	37	26,5	36	14	48	27	36	102038.4
			102039.1	102039	25	3/4	42	30	42	16	54	36	46	102039.4
			102040.1	102040	30	1	49	35,5	48	18	62	41	50	102040.4

Note: If you wish to order AISI 316 stainless steel fittings, please change the first two digits from 10.... to 11....
 If you wish to order AISI 316 stainless steel fittings with AISI 304 stainless steel nuts, please change the first two digits from 10.... to 14....
 Items not included in the ISO 8434-1 Norm.