

# COAX<sup>®</sup> cartridge MINI Pi12-3, holding cap, 01.06.923



- Three-stage COAX<sup>®</sup> cartridge - MINI - with high initial vacuum flow.
- Vacuum level to 27 -inHg at low feed pressure.
- High system reliability in case of fluctuating or low feed pressure.
- Suitable for handling sealed objects with high pick-up speed.
- Used in VGS<sup>™</sup>3010 and VGS<sup>™</sup>3040.

## General

Material	PA, SS, Al, Nitrile (NBR)
Temperature	14 – 176 °F
Weight	0.17 – 0.44 oz

## Performance

Feed pressure, max.	102 psi
---------------------	---------

## Vacuum flow

Feed pressure psi	Air consumption scfm	Vacuum flow (scfm) at different vacuum levels (-inHg)										Max vacuum -inHg
		0	3	6	9	12	15	18	21	24		
25	0.61	1.91	0.85	0.47	0.32	0.15	—	—	—	—	14.5	
32	0.72	2.33	1.02	0.61	0.42	0.3	0.17	0.04	—	—	18.9	
46	0.93	2.97	1.27	0.93	0.57	0.4	0.3	0.21	0.13	0.06	26.6	
58	1.12	2.97	1.48	1.1	0.83	0.51	0.25	0.21	0.13	0.04	24.8	

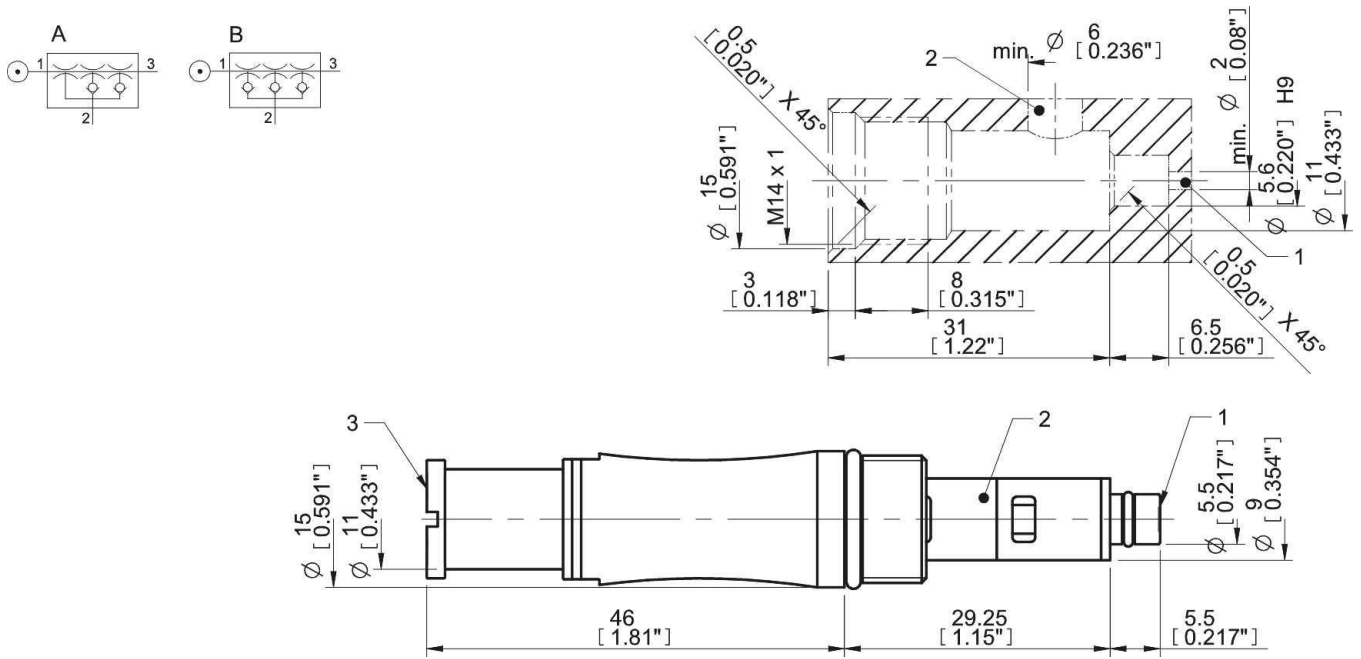
## Evacuation time

Feed pressure psi	Air consumption scfm	Evacuation time (s/cf) to reach different vacuum levels (-inHg)								Max vacuum -inHg
		3	6	9	12	15	18	21	24	
25	0.61	4.25	13	28.3	56.6	—	—	—	—	14.5
32	0.72	2.83	9.06	21.2	39.6	62.3	82.1	—	—	18.9
46	0.93	2.27	6.51	13.9	28.3	48.1	73.6	110	178	26.6
58	1.12	2.55	6.8	12.7	21.5	39.6	68	105	198	24.8

## Blow flow

Feed pressure psi	Air consumption scfm	Blow flow (scfm) at different pressure levels (psi)												Max pressure psi
		0	3	6	9	10	12	13	15	16	17	19	20	
87	1.59	3.96	2.97	2.82	2.37	2.18	2.18	2.18	2.18	2.12	2.01	1.82	1.67	20

## Dimensional drawings



## Values specified in the data sheet are tested at:

Room temperature	(20°C [68°F] ± 3°C [5.5°F])
Standard atmosphere	(101.3 [29.9 inHg] ± 1.0 kPa [0.3 inHg])
Relative humidity	0-100%
Compressed air quality	DIN ISO 8573-1 class 4

## Accessories

	Part no.
Silencer COAX® MINI	01.11.977
Exhaust adapter	01.06.344