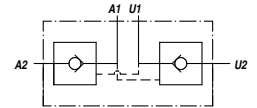
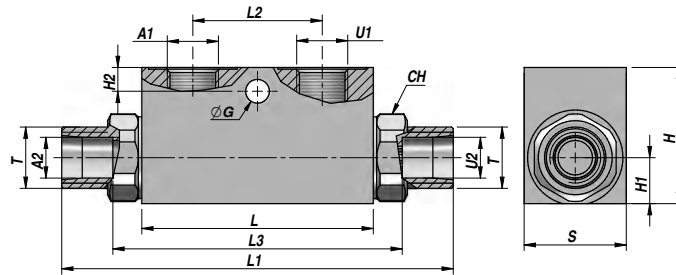
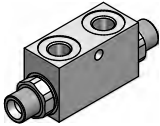


VRDE-AZ...FF

DOPPIO EFFETTO
DOUBLE ACTING
DOPPELWIRKEND

VALVOLA DI BLOCCO PILOTATA DIN 2353 (TENUTA A CONO)
PILOT OPERATED CHECK VALVE DIN 2353 (POPPET TYPE)
VORGESTEUERTES SPERRVENTIL DIN 2353 (KEGELSPERRUNG)



Codice Code Bestell-Nr.	A1 - U1 BSP	A2 - U2	T	Q MAX l/min	P MAX bar	PILOT RATIO	Tipo Type Typ	L max	L1	L2	L3	ØG	H2	CH	H1	H	S	kg
VSG322.F10454	1/4"	Ø12	M18x1,5	30	350	1:4,5	VRDE-AZ 010 FF	68	138	38	86	7	7	24	13	40	30	0,67
VSG322.F15454	3/8"	Ø12	M18x1,5	30	350	1:4,5	VRDE-AZ 015 FF	68	138	38	86	7	7	24	13	40	30	0,66
VSG322.F20404	3/8"	Ø15	M22x1,5	50	300	1:4	VRDE-AZ 020 FF	80	166	40	108	8,5	15	27	16	50	30	0,97
VSG322.F25404	1/2"	Ø15	M22x1,5	50	300	1:4	VRDE-AZ 025 FF	80	166	40	108	8,5	15	27	16	50	30	0,91
VSG322.F30404	1/2"	Ø18	M26x1,5	80	300	1:4	VRDE-AZ 030 FF	90	180	40	133	8,5	15	30	20	60	40	1,67

Pressione di apertura - Opening pressure - Öffnungsdruck: bar 0,5 - 4 (Standard) - 8
SENZA DADO E ANELLO DI SERRAGGIO - WITHOUT NUT AND CUTTING RING - OHNE ÜBERWURFMUTTER UND SCHNEIDRING

MONTAGGIO SU CILINDRO
CYLINDER MOUNTING
MONTAGE AM ZYLINDER

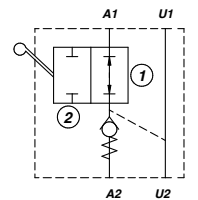
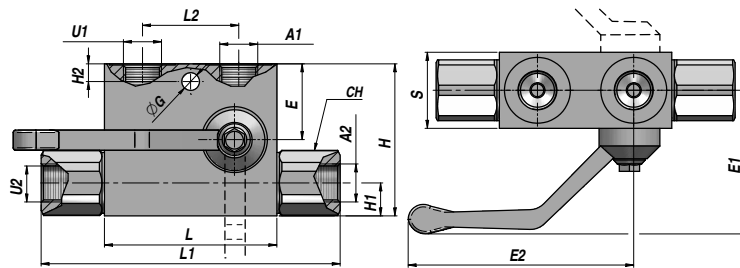
MATERIALE - MATERIAL: ACCIAIO - STEEL - STAHL

ACCESSORI: VEDI PAGINA 112
ACCESSORIES: SEE PAGE 112
ZUBEHÖRE: SIEHE SEITE 112

VRPSE

SEMPLICE EFFETTO
SINGLE ACTING
EINFACHWIRKEND

VALVOLA DI BLOCCO PILOTATA + BY PASS (TENUTA A CONO)
PILOT OPERATED CHECK VALVE + BY PASS (POPPET TYPE)
VORGESTEUERTES SPERRVENTIL + BY PASS (KEGELSPERRUNG)



Codice Code Bestell-Nr.	A1 - U1 BSP	A2 - U2 BSP	Q MAX l/min	P MAX bar	PILOT RATIO	Tipo Type Typ	L	L1	L2	E	E1 max	E2 max	ØG	H2	CH	H1	H	S	kg
Versione sinistra - Left version - Linke Version																			
VSG331.104504	1/4"	1/4"	25	350	1:4,5	VRPSE 010-FL	68	118	38	29	65	90	7	7	24	13	60	30	0,95
VSG331.154504	3/8"	3/8"	25	350	1:4,5	VRPSE 015-FL	68	118	38	29	65	90	7	7	24	13	60	30	0,95
VSG331.204504	3/8"	3/8"	50	300	1:4	VRPSE 020-FL	80	143	40	25,5	60	100	8,5	9	27	16	60	30	1,12
VSG331.254504	1/2"	1/2"	50	300	1:4	VRPSE 025-FL	80	143	40	25,5	60	100	8,5	9	27	16	60	30	1,12
Versione destra - Right version - Rechte Version																			
VSG332.104504	1/4"	1/4"	25	350	1:4,5	VRPSE 010-FR	68	118	38	29	65	90	7	7	24	13	60	30	0,95
VSG332.154504	3/8"	3/8"	25	350	1:4,5	VRPSE 015-FR	68	118	38	29	65	90	7	7	24	13	60	30	0,95
VSG332.204504	3/8"	3/8"	50	300	1:4	VRPSE 020-FR	80	143	40	25,5	60	100	8,5	9	27	16	60	30	1,12
VSG332.254504	1/2"	1/2"	50	300	1:4	VRPSE 025-FR	80	143	40	25,5	60	100	8,5	9	27	16	60	30	1,12

Pressione di apertura - Opening pressure - Öffnungsdruck: bar 0,5 - 4 (Standard) - 8

MONTAGGIO SU CILINDRO
CYLINDER MOUNTING
MONTAGE AM ZYLINDER

MATERIALE - MATERIAL: ACCIAIO - STEEL - STAHL