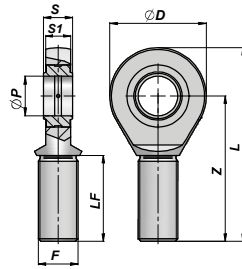
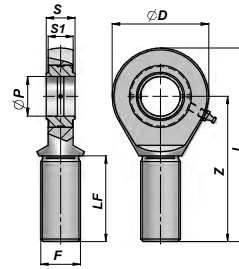


TERMINALE A SNODO RILUBRIFICABILE
BALL-JOINT END WITH GREASE NIPPLE

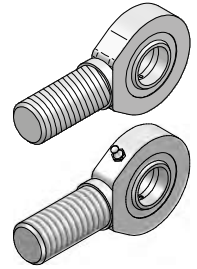
CSTFE...DO



TFE 6-20 DO/D02RS



TFE 25-80 DO/D02RS



Codice Code Type DO	Codice Code Type DO...2RS	ØP	Z	S	ØD	S1	L	F	LF	FC (kN)	kg
*CSTFE906DO		6	36	6	21	4.3	46.5	M6x1	18	3.4	0.01
*CSTFE908DO		8	42	8	24	6.0	54.0	M8x1.25	22	5.5	0.03
*CSTFE910DO		10	48	9	29	7.0	62.5	M10x1.5	27	8.1	0.05
*CSTFE912DO		12	54	10	34	8.0	71.0	M12x1.75	30	10.8	0.08
**CSTFE915DO		15	63	12	40	10.0	83.0	M14x2	34	17.0	0.14
**CSTFE917DO	**CSTFE917D2	17	69	14	46	11.0	92.0	M16x2	36	21.2	0.19
**CSTFE920DO	**CSTFE920D2	20	78	16	53	13.0	104.5	M20x1.5	43	30.0	0.31
CSTFE925DO	CSTFE925D2	25	94	20	64	17.0	126.0	M24x2	53	48.0	0.56
CSTFE930DO	CSTFE930D2	30	110	22	73	19.0	146.5	M30x2	65	62.0	0.89
CSTFE935DO	CSTFE935D2	35	140	25	82	21.0	181.0	M36x3	82	80.0	1.40
CSTFE940DO	CSTFE940D2	40	150	28	92	23.0	196.0	M39x3	86	100.0	1.80
CSTFE945DO	CSTFE945D2	45	163	32	102	27.0	218.0	M42x3	94	127.0	2.60
CSTFE950DO	CSTFE950D2	50	185	35	112	30.0	241.0	M45x3	106	156.0	3.40
CSTFE960DO	CSTFE960D2	60	210	44	135	38.0	277.5	M52x3	115	245.0	5.90
CSTFE970DO	CSTFE970D2	70	235	49	160	42.0	315.0	M56x4	125	315.0	8.20
CSTFE980DO	CSTFE980D2	80	270	55	180	47.0	360.0	M64x4	140	400.0	13.10

FC = CARICO DINAMICO AMMESSO - MAX DYNAMIC LOAD

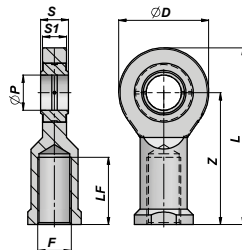
* = NON RILUBRIFICABILE - WITHOUT GREASE NIPPLE

** = RILUBRIFICABILE MEDIANTE FORO - LUBRICATING HOLE IN THE HEAD

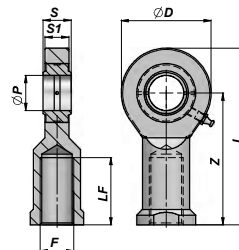
MATERIALE : ACCIAIO ISO 12240-4 SERIE E TIPO M - MATERIAL : STEEL ISO 12240-4 SERIES E TYPE M

TERMINALE A SNODO RILUBRIFICABILE
BALL-JOINT END WITH GREASE NIPPLE

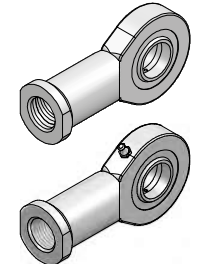
CSTFI...DO



TFI 6-20 DO/D02RS



TFI 25-80 DO/D02RS



Codice Code Type DO	Codice Code Type DO...2RS	ØP	Z	S	ØD	S1	L	F	LF	FC (kN)	kg
*CSTFI806DO		6	30	6	21	4.3	40.5	M6x1	11	3.4	0.02
*CSTFI808DO		8	36	8	24	6.0	48.0	M8x1.25	15	5.5	0.04
*CSTFI810DO		10	43	9	29	7.0	57.5	M10x1.5	20	8.1	0.06
*CSTFI812DO		12	50	10	34	8.0	67.0	M12x1.75	24	10.8	0.09
**CSTFI815DO		15	61	12	40	10.0	81.0	M14x2	30	17.0	0.18
**CSTFI817DO	**CSTFI817D2	17	67	14	46	11.0	90.0	M16x2	34	21.2	0.22
**CSTFI820DO	**CSTFI820D2	20	77	16	53	13.0	103.5	M20x1.5	40	30.0	0.35
CSTFI825DO	CSTFI825D2	25	94	20	64	17.0	126.0	M24x2	48	48.0	0.64
CSTFI830DO	CSTFI830D2	30	110	22	73	19.0	146.5	M30x2	56	62.0	0.93
CSTFI835DO	CSTFI835D2	35	125	25	82	21.0	166.0	M36x3	60	80.0	1.30
CSTFI840DO	CSTFI840D2	40	142	28	92	23.0	188.0	M39x3	67	100.0	2.01
CSTFI845DO	CSTFI845D2	45	145	32	102	27.0	196.0	M42x3	65	127.0	2.50
CSTFI850DO	CSTFI850D2	50	160	35	112	30.0	216.0	M45x3	69	156.0	3.50
CSTFI860DO	CSTFI860D2	60	175	44	135	38.0	242.0	M52x3	73	245.0	5.50
CSTFI870DO	CSTFI870D2	70	200	49	160	42.0	280.0	M56x4	80	315.0	8.60
CSTFI880DO	CSTFI880D2	80	230	55	180	47.0	320.0	M64x4	85	400.0	12.00

FC = CARICO DINAMICO AMMESSO - MAX DYNAMIC LOAD

* = NON RILUBRIFICABILE - WITHOUT GREASE NIPPLE

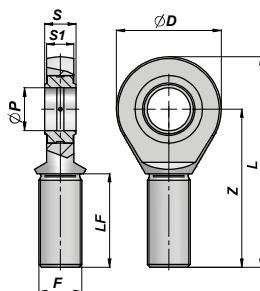
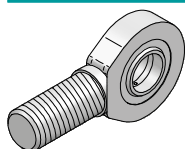
** = RILUBRIFICABILE MEDIANTE FORO - LUBRICATING HOLE IN THE HEAD

MATERIALE : ACCIAIO ISO 12240-4 SERIE E TIPO F - MATERIAL : STEEL ISO 12240-4 SERIES E TYPE F

CSTFE..UK

NEW!

TERMINALE A SNODO NON RICHIEDENTE MANUTENZIONE
MAINTENANCE FREE BALL-JOINT



Code Code Type UK	Code Code Type UK...2RS	ØP	Z	S	ØD	S1	L	F	LF	FC (kN)	kg
CSTF1106UK		6	36	6	21	4.3	46.5	M6x1	18	3.6	0,01
CSTF1108UK		8	42	8	24	6.0	54.0	M8x1.25	22	5.8	0,03
CSTF1110UK		10	48	9	29	7.0	62.5	M10x1.5	27	8.6	0,05
CSTF1112UK		12	54	10	34	8.0	71.0	M12x1.75	30	11.4	0,08
CSTF1115UK		15	63	12	40	10.0	83.0	M14x2	34	17.6	0,14
CSTF1117UK	CSTF1117U2	17	69	14	46	11.0	92.0	M16x2	36	22.4	0,19
CSTF1120UK	CSTF1120U2	20	78	16	53	13.0	104.5	M20x1.5	43	31.5	0,31
CSTF1125UK	CSTF1125U2	25	94	20	64	17.0	126.0	M24x2	53	51.0	0,56
CSTF1130UK	CSTF1130U2	30	110	22	73	19.0	146.5	M30x2	65	65.5	0,89
	CSTF1135U2	35	140	25	82	21.0	181.0	M36x3	82	112.0	1,40
	CSTF1140U2	40	150	28	92	23.0	196.0	M39x3	86	140.0	1,80
	CSTF1145U2	45	163	32	102	27.0	218.0	M42x3	94	180.0	2,60
	CSTF1150U2	50	185	35	112	30.0	241.0	M45x3	106	220.0	3,40
	CSTF1160U2	60	210	44	135	38.0	277.5	M52x3	115	345.0	5,90
	CSTF1170U2	70	235	49	160	42.0	315.0	M56x4	125	440.0	8,20
	CSTF1180U2	80	270	55	180	47.0	360.0	M64x4	140	570.0	12,00

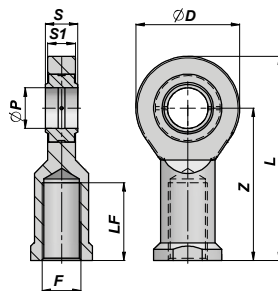
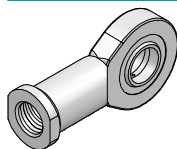
FC = CARICO DINAMICO AMMESSO - MAX DYNAMIC LOAD

MATERIALE : ACCIAIO ISO 12240-4 SERIE E TIPO M
MATERIAL : STEEL ISO 12240-4 SERIES E TYPE M

CSTFI..UK

NEW!

TERMINALE A SNODO NON RICHIEDENTE MANUTENZIONE
MAINTENANCE FREE BALL-JOINT



Code Code Type UK	Code Code Type UK...2RS	ØP	Z	S	ØD	S1	L	F	LF	FC (kN)	kg
CSTF1006UK		6	30	6	21	4.3	40.5	M6x1	11	3.6	0,02
CSTF1008UK		8	36	8	24	6.0	48.0	M8x1.25	15	5.8	0,04
CSTF1010UK		10	43	9	29	7.0	57.5	M10x1.5	20	8.6	0,06
CSTF1012UK		12	50	10	34	8.0	67.0	M12x1.75	24	11.4	0,09
CSTF1015UK		15	61	12	40	10.0	81.0	M14x2	30	17.6	0,18
CSTF1017UK	CSTF1017U2	17	67	14	46	11.0	90.0	M16x2	34	22.4	0,22
CSTF1020UK	CSTF1020U2	20	77	16	53	13.0	103.5	M20x1.5	40	31.5	0,35
CSTF1025UK	CSTF1025U2	25	94	20	64	17.0	126.0	M24x2	48	51.0	0,64
CSTF1030UK	CSTF1030U2	30	110	22	73	19.0	146.5	M30x2	56	65.5	0,93
	CSTF1035U2	35	125	25	82	21.0	166.0	M36x3	60	112.0	1,30
	CSTF1040U2	40	142	28	92	23.0	188.0	M39x3	67	140.0	2,01
	CSTF1045U2	45	145	32	102	27.0	196.0	M42x3	65	180.0	2,50
	CSTF1050U2	50	160	35	112	30.0	216.0	M45x3	69	220.0	3,50
	CSTF1060U2	60	175	44	135	38.0	242.0	M52x3	73	345.0	5,50
	CSTF1070U2	70	200	49	160	42.0	280.0	M56x4	80	440.0	8,60
	CSTF1080U2	80	230	55	180	47.0	320.0	M64x4	85	570.0	12,00

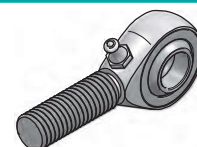
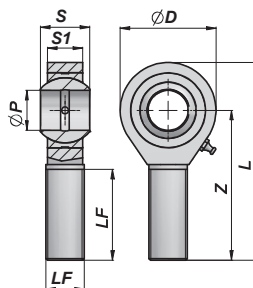
FC = CARICO DINAMICO AMMESSO - MAX DYNAMIC LOAD

MATERIALE : ACCIAIO ISO 12240-4 SERIE E TIPO F
MATERIAL : STEEL ISO 12240-4 SERIES E TYPE F

TERMINALE A SNODO RILUBRIFICABILE
BALL-JOINT END WITH GREASE NIPPLE

NEW!

CSTFE...PB



Codice Code	ØP	Z	S	ØD	S1	L	F	LF	FC (kN)	kg
CSTF1235PB	5	33	8	16	6.0	35	M5x0.8	14	3.3	0,01
CSTF1236PB	6	36	9	18	6.7	39	M6x1	14	4.3	0,01
CSTF1237PB	8	42	12	22	9.0	47	M8x1.25	17	6.8	0,03
CSTF1238PB	10	48	14	26	10.5	56	M10x1.5	21	10.0	0,08
CSTF1239PB	12	54	16	30	12.0	65	M12x1.75	24	13.0	0,12
CSTF1240PB	14	60	19	34	13.5	74	M14x2	27	17.0	0,14
CSTF1241PB	16	66	21	38	15.0	83	M16x2	33	21.0	0,22
CSTF1242PB	18	72	23	42	16.5	92	M18x1.5	36	26.0	0,32
CSTF1243PB	20	78	25	48	18.0	100	M20x1.5	40	31.0	0,43
CSTF1244PB	22	84	28	50	20.0	109	M22x1.5	43	38.0	0,61
CSTF1245PB	25	94	31	60	22.0	124	M24x2	48	47.0	0,81
CSTF1247PB	28	103	35	66	25.0	136	M27x2	53	59.0	1,20
CSTF1246PB	30	110	37	70	25.0	145	M30x2	56	63.0	1,40

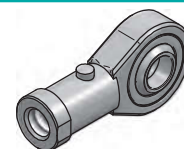
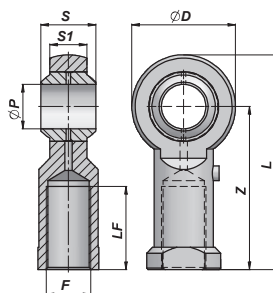
FC = CARICO DINAMICO AMMESSO - MAX DYNAMIC LOAD

MATERIALE : ACCIAIO ISO 12240-4 SERIE K - ISO 6126
MATERIAL : STEEL ISO 12240-4 SERIES K - ISO 6126

TERMINALE A SNODO RILUBRIFICABILE
BALL-JOINT END WITH GREASE NIPPLE

NEW!

CSTFI...PB



Codice Code	ØP	Z	S	ØD	S1	L	F	LF	FC (kN)	kg
CSTF1205PB	5	27	8	16	6.0	35	M5x0.8	14	3.3	0,01
CSTF1206PB	6	30	9	18	6.7	39	M6x1	14	4.3	0,01
CSTF1208PB	8	36	12	22	9.0	47	M8x1.25	17	6.8	0,03
CSTF1210PB	10	43	14	26	10.5	56	M10x1.5	21	10.0	0,08
CSTF1212PB	12	50	16	30	12.0	65	M12x1.75	24	13.0	0,12
CSTF1214PB	14	57	19	34	13.5	74	M14x2	27	17.0	0,14
CSTF1216PB	16	64	21	38	15.0	83	M16x2	33	21.0	0,22
CSTF1218PB	18	71	23	42	16.5	92	M18x1.5	36	26.0	0,32
CSTF1220PB	20	77	25	48	18.0	100	M20x1.5	40	31.0	0,43
CSTF1222PB	22	84	28	50	20.0	109	M22x1.5	43	38.0	0,61
CSTF1225PB	25	94	31	60	22.0	124	M24x2	48	47.0	0,81
CSTF1228PB	28	103	35	66	25.0	136	M27x2	53	59.0	1,20
CSTF1230PB	30	110	37	70	25.0	145	M30x2	56	63.0	1,40

FC = CARICO DINAMICO AMMESSO - MAX DYNAMIC LOAD

MATERIALE : ACCIAIO ISO 12240-4 SERIE K - ISO 6126
MATERIAL : STEEL ISO 12240-4 SERIES K - ISO 6126