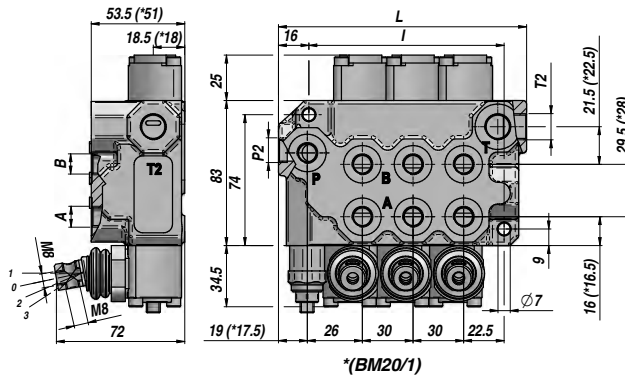
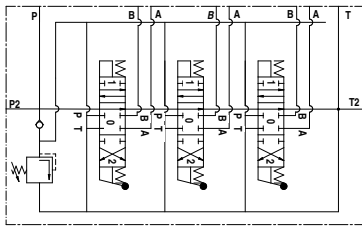


DISTRIBUTORE MONOBLOCCO
MONOBLOCK VALVE
MONOBLOCKWEGEVENTILE

Qn
17 l/min

Q max
25 l/min

BM 20



Codice Code Bestell-Nr.	Tipo Type Typ	N° sezioni Sections No. Sektionen-Nr.	Filetti - Threads - Gewinde					PN bar	P MAX U bar	P MAX S bar	L	I	kg
			A-B BSP	P BSP	T BSP	P2 BSP	T2 BSP						
DBM0111001	BM 20/1/GU/MO A1	1									76	50	1,50
DBM0211001	BM 20/2/GU/MO A1 x 2	2									111,5	80	2,70
DBM0311001	BM 20/3/GU/MO A1 x 3	3	1/4"	1/4"	3/8"	3/8"	3/8"	250	320	80	141,5	110	3,80
DBM0411001	BM 20/4/GU/MO A1 x 4	4									171,5	140	4,60
DBM0511001	BM 20/5/GU/MO A1 x 5	5									201,5	170	5,40
DBM0611001	BM 20/6/GU/MO A1 x 6	6									231,5	200	6,20

PN = Pressione nominale - Nominal pressure - Nenndruck

P MAX U = Pressione Max. sugli utilizzi - Max. pressure on ports - Max. Druck in den Anschlüssen

P MAX S = Pressione Max. allo scarico - Max. pressure in tank-line - Max Druck am Tank

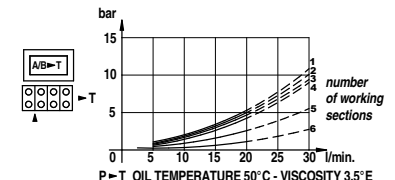
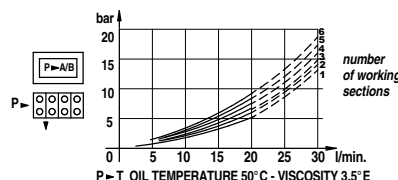
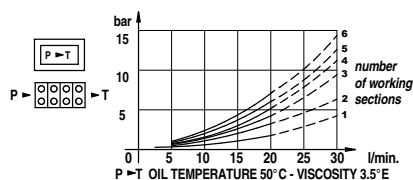
Valvola Max. Pressione - Relief Valve - DBV: X = 30:90 bar (70) - U = 80:230 bar (140) (Standard) - K = 150:300 bar (200)

I CODICI SONO RIFERITI AI MODELLI - THESE CODES REFER TO - DIE ARTIKELNUMMER BEZIEHEN SICH AUF:

DOPIO EFFETTO - 3 POSIZIONI - RITORNO A MOLLA - A/B CHIUSI - FILETTI BSP - PREDISPOSTO PER CARRY-OVER

DOUBLE ACTING TYPE - 3 POSITIONS - SPRING RETURN - A/B PORTS CLOSED - BSP THREADS - MACHINED FOR CARRY-OVER

D.W. TYPEN - 3 STELLUNGEN - RÜCKFEDER - A/B GESCHLOSSEN - BSP GEWINDE - FÜR DRUCKWEITERLEITUNG GEEIGNET



CURSORE SPOOL TYPE - SCHIEBERTYP	
A	
B	
C	
D	
K	

POSIZIONATORE SPOOL CONTROL - BETÄTIGUNGSART	
1	
2	
3	
6	
7	
8	
16	

A RICHIESTA ON REQUEST - AUF ANFRAGE	
MC	comando manuale + camma manual operator with cam manuelle Betätigung + Zapfen
MX	leva di sicurezza safety lever Sicherheitshebel
DO	comando a camma cam operator Nockensteuerung
JS	manipolatore joystick Joystick
MSW	microinterruttore microswitch Mikroschalter-Betätigung
CO	proseguimento di pressione power beyond (carry over) Druckweiterleitung
CCP	tappo centro chiuso closed center plug Stopfen für geschlossene Mittelstellung