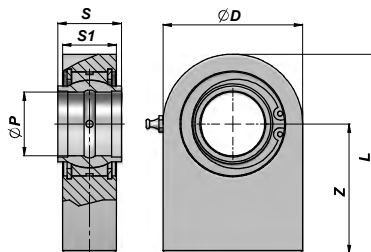
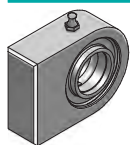


CSTSCE...N

TERMINALE A SNODO RILUBRIFICABILE
BALL-JOINT END WITH GREASE NIPPLE



Codice Code	ØP	Z	S	ØD	S1	L	FC (kN)	kg
CSTSCE720N	20	38	20	50	19	63.0	30.0	0,36
CSTSCE725N	25	45	25	55	23	72.5	48,0	0,54
CSTSCE732N	32	65	32	70	27	103.0	62,5	1,12
CSTSCE740N	40	69	40	100	35	119.0	100.0	2,50
CSTSCE750N	50	88	50	123	40	149.5	156.0	4,60
CSTSCE763N	63	107	63	145	50	178.0	248,0	9,30
CSTSCE770N	70	115	70	164	55	197.0	315.0	11,25
CSTSCE780N	80	141	80	180	60	231.0	400.0	15,75
CSTSCE790N (1)	90	150	90	226	65	263.0	490.0	24,00
CSTSCE795N (1)	100	170	100	250	70	295.0	610.0	33,95
CSTSCE796N (1)	110	185	110	295	80	332.5	655.0	49,00
CSTSCE797N (1)	125	210	125	360	90	390.0	950.0	81,00

FC = CARICO DINAMICO AMMESSO - MAX DYNAMIC LOAD

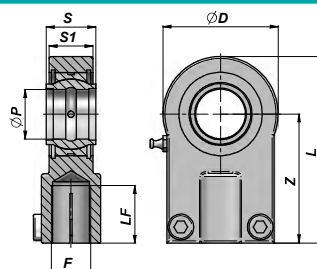
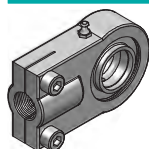
(1) = PANTOGRAFATI - PROFILE PLATE

MATERIALE : ACCIAIO ISO 12240-1 SERIE W

MATERIAL : STEEL ISO 12240-1 SERIES W

CSTAPR...CE

TERMINALE A SNODO RILUBRIFICABILE
BALL-JOINT END WITH GREASE NIPPLE



Codice Code	ØP	Z	S	ØD	S1	L	F	LF	FC (kN)	kg
*CSTAPR612C	12	38	12	32	11	54	M12x1,25	17	10.8	0,11
CSTAPR616C	16	44	16	40	13	64	M14x1,5	19	17.6	0,20
CSTAPR620C	20	52	20	47	17	77	M16x1,5	23	30.0	0,35
CSTAPR625C	25	65	25	58	22	96	M20x1,5	29	48.0	0,62
CSTAPR632C	32	80	32	71	28	118	M27x2	37	67.0	1,15
CSTAPR640C	40	97	40	90	33	146	M33x2	46	100.0	2,18
CSTAPR650C	50	120	50	109	41	179	M42x2	57	156.0	3,96
CSTAPR663C	63	140	63	136	53	213	M48x2	64	255.0	6,80
CSTAPR670C (**)(A)	70	160	70	155	57	245	M56x2	76	315.0	9,60
CSTAPR680C (**)	80	180	80	170	67	270	M64x3	86	400.0	13,00
CSTAPR690C (**)(A)	90	195	90	185	72	296	M72x3	91	490.0	19,10
CSTAPR695C (**)	100	210	100	211	85	322	M80x3	96	610.0	25,00
CSTAPR696C (**)(A)	110	235	110	235	88	364	M90x3	106	655.0	32,00
CSTAPR697C (**)	125	260	125	265	103	406,5	M100x3	113	950.0	46,00

FC = CARICO DINAMICO AMMESSO - MAX DYNAMIC LOAD

(A) = FUORI NORMATIVA - OUT OF RULE

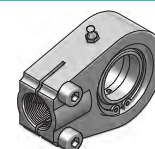
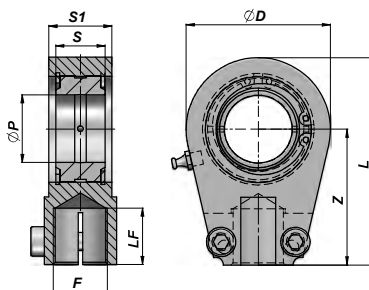
* = NON RILUBRIFICABILE - WITHOUT GREASE NIPPLE

MATERIALE : ACCIAIO DIN 24338 - ISO 6982 - ISO 8132 - (**)= GHISA SFEROIDALE

MATERIAL : STEEL DIN 24338 - ISO 6982 - ISO 8132 - (**)= NODULAR CAST IRON

TERMINALE A SNODO RILUBRIFICABILE
BALL-JOINT END WITH GREASE NIPPLE

CSTAPR...U



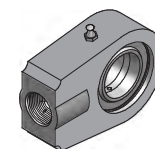
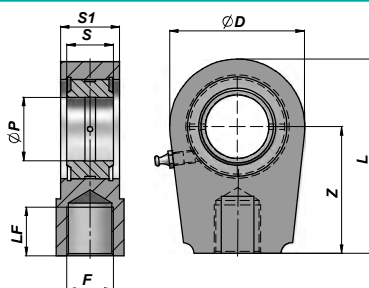
Codice Code	ØP	Z	S	ØD	S1	L	F	LF	FC (kN)	kg
CSTAPR020U	20	50	16	56	19	80	M16x1.5	17	30	0,44
CSTAPR025U	25	50	20	56	23	80	M16x1.5	17	48	0,47
CSTAPR030U	30	60	22	64	28	94	M22x1.5	23	62	0,77
CSTAPR035U	35	70	25	78	30	112	M28x1.5	29	80	1,24
CSTAPR040U	40	85	28	94	35	135	M35x1.5	36	100	2,12
CSTAPR050U	50	105	35	116	40	168	M45x1.5	46	156	3,74
CSTAPR060U	60	130	44	130	50	200	M58x1.5	59	245	6,49
CSTAPR070U	70	150	49	154	55	232	M65x1.5	66	315	9,88
CSTAPR080U	80	170	55	176	60	265	M80x2	81	400	14,20
CSTAPR090U (**)	90	210	60	206	65	322	M100x2	101	490	20,00
CSTAPR100U (**)	100	235	70	231	70	360	M110x2	111	610	27,50
CSTAPR110U (**)	110	265	70	266	80	407,5	M120x3	125	655	45,60
CSTAPR120U (**)	120	310	85	340	90	490	M130x3	135	950	72,00

FC = CARICO DINAMICO AMMESSO - MAX DYNAMIC LOAD

MATERIALE : ACCIAIO ISO 12240-1 SERIE W - (**)= GHISA SFEROIDALE
MATERIAL : STEEL ISO 12240-1 SERIES W - (**)= NODULAR CAST IRON

TERMINALE A SNODO RILUBRIFICABILE
BALL-JOINT END WITH GREASE NIPPLE

CSTAPR...N



Codice Code	ØP	Z	S	ØD	S1	L	F	LF	FC (kN)	kg
CSTAPR020N	20	50	16	56	19	80	M16x1.5	17	30	0,45
CSTAPR025N	25	50	20	56	23	80	M16x1.5	17	48	0,49
CSTAPR030N	30	60	22	64	28	94	M22x1.5	23	62	0,76
CSTAPR035N	35	70	25	78	30	112	M28x1.5	29	80	1,26
CSTAPR040N	40	85	28	94	35	135	M35x1.5	36	100	2,15
CSTAPR050N	50	105	35	116	40	168	M45x1.5	46	156	3,80
CSTAPR060N	60	130	44	130	50	200	M58x1.5	59	245	6,20
CSTAPR070N	70	150	49	154	55	232	M65x1.5	66	315	9,83
CSTAPR080N	80	170	55	176	60	265	M80x2	81	400	13,97
CSTAPR090N (**)	90	210	60	206	65	322	M100x2	101	490	23,50
CSTAPR100N (**)	100	235	70	231	70	360	M110x2	111	610	32,00
CSTAPR110N (**)	110	265	70	266	80	407	M120x3	125	655	41,00
CSTAPR120N (**)	120	310	85	340	90	490	M130x3	135	950	72,00

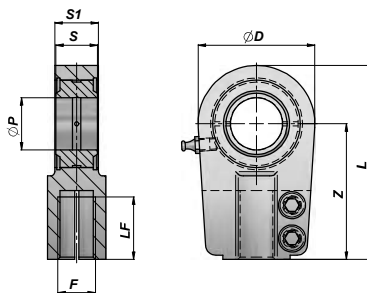
FC = CARICO DINAMICO AMMESSO - MAX DYNAMIC LOAD

MATERIALE : ACCIAIO ISO 12240-1 SERIE E - (**)= GHISA SFEROIDALE
MATERIAL : STEEL ISO 12240-1 SERIES E - (**)= NODULAR CAST IRON

CSTAPR...UGAS

NEW!

TERMINALE A SNODO RILUBRIFICABILE
BALL-JOINT END WITH GREASE NIPPLE



Codice Code	ØP	Z	S	ØD	S1	L	F	LF	FC (kN)	kg
CSTAPR025UGAS	25	65	20	56	23	95	M18x2	30	48	0,65
CSTAPR030UGAS	30	75	22	64	28	109	M24x2	35	62	1,00
CSTAPR035UGAS	35	90	25	78	30	132	M30x2	45	80	1,30
CSTAPR040UGAS	40	105	28	94	35	155	M39x2	55	100	2,40
CSTAPR050UGAS	50	135	35	116	40	198	M50x3	75	156	4,10
CSTAPR060UGAS	60	170	44	130	50	240	M64x3	95	245	6,50
CSTAPR070UGAS (**)	70	195	49	154	55	278	M80x3	110	315	9,50
CSTAPR080UGAS (**)	80	210	55	176	60	305	M90x3	120	400	16,00
CSTAPR090UGAS (**)	90	250	60	206	65	363	M100x3	140	490	28,00
CSTAPR100UGAS (**)	100	275	70	230	70	400	M110x4	150	610	34,00
CSTAPR110UGAS (**)	110	300	70	264	80	442	M120x4	160	650	44,00
CSTAPR120UGAS (**)	120	360	85	340	90	540	M150x4	190	950	75,00

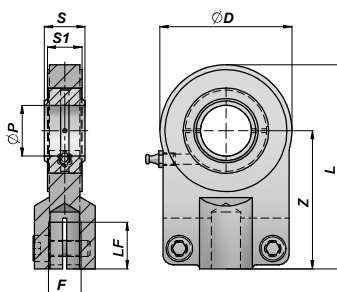
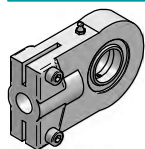
FC = CARICO DINAMICO AMMESSO - MAX DYNAMIC LOAD

MATERIALE : ACCIAIO ISO 12240-1 SERIE E - (**)= GHISA SFEROIDALE
MATERIAL : STEEL ISO 12240-1 SERIES E - (**)= NODULAR CAST IRON

CSTAPR...S

NEW!

TERMINALE A SNODO RILUBRIFICABILE
BALL-JOINT END WITH GREASE NIPPLE



Codice Code	ØP	Z	S	ØD	S1	L	F	LF	FC (kN)	kg
*CSTAPR701D	12	42	10	35	8	58	M10x1,25	15	10,8	0,12
**CSTAPR702D (A)	16	48	14	45	11	69	M12x1,25	17	21,1	0,22
**CSTAPR703D	20	58	16	55	13	83	M14x1,5	19	30,0	0,46
CSTAPR704D	25	68	20	65	17	99	M16x1,5	23	48,0	0,67
CSTAPR705D	30	85	22	80	19	123	M20x1,5	29	62,0	1,25
CSTAPR706D	40	105	28	100	23	153	M27x2	37	100,0	2,16
CSTAPR707D	50	130	35	120	30	188	M33x2	46	156,0	3,90
CSTAPR708D	60	150	44	160	38	230	M42x2	57	245,0	7,15
CSTAPR709D (**)	80	185	55	205	47	282,5	M48x2	64	400,0	15,00
CSTAPR710D (**)	100	240	70	240	55	357,5	M64x3	86	610,0	27,30

FC = CARICO DINAMICO AMMESSO - MAX DYNAMIC LOAD
(A) = FUORI NORMATIVA - OUT OF RULE

* = NON RILUBRIFICABILE - WITHOUT GREASE NIPPLE
** = RILUBRIFICABILE MEDIANTE FORO - LUBRICATING HOLE IN THE HEAD

MATERIALE : ACCIAIO DIN 24555 - ISO 8133 - (**)= GHISA SFEROIDALE
MATERIAL : STEEL DIN 24555 - ISO 8133 - (**)= NODULAR CAST IRON