

# COAX<sup>®</sup> cartridge MINI Si08-3, holding cap silencer, vacuum filter, 01.13.579



- Three-stage COAX<sup>®</sup> cartridge - MINI - with extra high initial vacuum flow.
- Includes a flow-through silencer and a built-in vacuum filter for harsh environments.
- Large vacuum flow in relation to energy consumption.
- Good for handling porous materials or if leakage is present. Recommended for high speed applications.
- Used in P3010.

## General

Material	PA, PP, SS, Nitrile (NBR)
Temperature	14 – 176 °F
Weight	0.45 oz

## Performance

Feed pressure, max.	102 psi
---------------------	---------

## Vacuum flow

Feed pressure psi	Air consumption scfm	Vacuum flow (scfm) at different vacuum levels (-inHg)									Max vacuum -inHg
		0	3	6	9	12	15	18	21		
58	0.66	2.33	1.21	0.76	0.55	0.38	0.19	—	—	17.7	
73	0.81	2.61	1.38	0.97	0.61	0.49	0.32	0.17	0.02	20.7	
87	0.93	2.84	1.55	1.17	0.74	0.49	0.36	0.28	0.17	22.1	

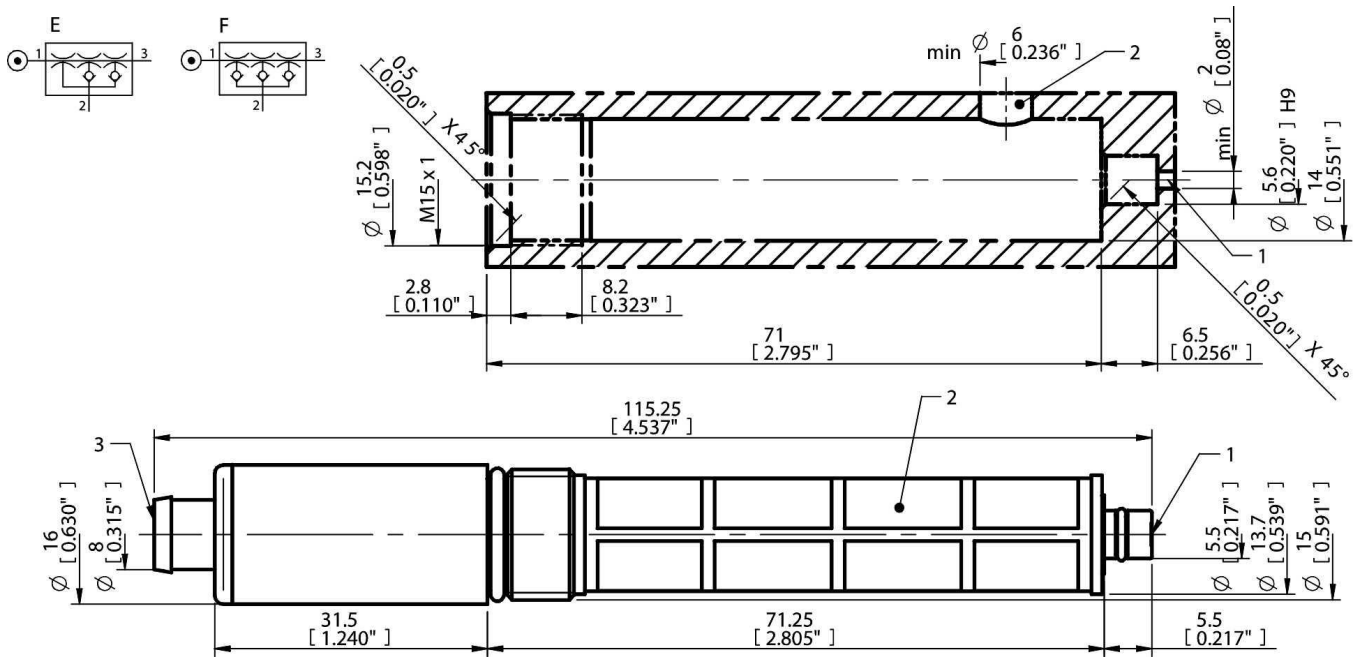
## Evacuation time

Feed pressure psi	Air consumption scfm	Evacuation time (s/cf) to reach different vacuum levels (-inHg)								Max vacuum -inHg
		3	6	9	12	15	18	21		
58	0.66	3.4	9.34	18.7	31.1	53.8	—	—	17.7	
73	0.81	3.11	8.21	15.6	25.5	42.5	65.1	130	20.7	
87	0.93	2.83	7.08	13.6	22.7	36.8	56.6	82.1	22.1	

## Blow flow

Feed pressure psi	Air consumption scfm	Blow flow (scfm) at different pressure levels (psi)									Max pressure psi
		0	1	3	4	6	7	9	10		
87	0.93	3.77	2.46	2.18	1.82	1.7	1.59	1.4	1.12	10	

## Dimensional drawings



Values specified in the data sheet are tested at:

Room temperature	(20°C [68°F] ± 3°C [5.5°F])
Standard atmosphere	(101.3 [29.9 inHg] ± 1.0 kPa [0.3 inHg])
Relative humidity	0-100%
Compressed air quality	DIN ISO 8573-1 class 4

## Accessories

	Part no.
Silencer COAX® MINI	01.11.977
Exhaust adapter	01.06.344